

TECHNICAL MANUAL

**ORGANIZATIONAL AND DIRECT SUPPORT
MAINTENANCE
REPAIR PARTS AND SPECIAL TOOLS LIST**

**TANK AND PUMP UNIT, LIQUID
DISPENSING FOR TRUCK MOUNTING
MIL DESIGN TANK AND PUMP UNITS
GASOLINE ENGINE DRIVEN
MODEL (97403)13217E7100
NSN 4930-00-426-9960
ELECTRIC MOTOR DRIVEN
MODEL (97403) 13217E7130
NSN 4930-01-120-7281**

Approved for public release; distribution is unlimited

* This manual supersedes TM 5-4930-230-23P, 12 December 1985, including all changes

HEADQUARTERS, DEPARTMENT OF THE ARMY

28 JANUARY 1992

CHANGE
NO. 2

HEADQUARTERS
DEPARTMENT OF THE ARMY
WASHINGTON, D.C., 1 May 1996

Organizational and Direct Support
Maintenance
Repair Parts and Special Tools List

**TANK AND PUMP UNIT, LIQUID
DISPENSING FOR TRUCK MOUNTING
MIL DESIGN TANK AND PUMP UNITS
GASOLINE ENGINE DRIVEN
MODEL (97403) 13217E7100
NSN 4930-00-426-9960
ELECTRIC MOTOR DRIVEN
MODEL (97403) 13217E7130
NSN4930-01-130-7281**

DISTRIBUTION STATEMENT A: Approved for public release; distribution is unlimited.

TM 5-4930-230-23P, 28 January 1992, is changed as follows:

1. Remove and insert pages as indicated below. New or changed text material is indicated by a vertical bar in the margin. An illustration change is indicated by a miniature pointing hand.

Remove pages

i/(ii blank)
Figure 1 (Sheet 1 of 2) and
Figure 1 (Sheet 2 of 2)

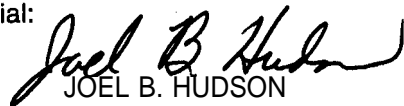
Insert pages

i/(ii blank)
Figure 1 (Sheet 1 of 2) and
Figure 1 (Sheet 2 of 2)

2. Retain this sheet in front of manual for reference purposes.

By Order of the Secretary of the Army:

Official:



Handwritten signature of Joel B. Hudson in black ink.

JOEL B. HUDSON

*Acting Administrative Assistant to the
Secretary of the Army*

01510

DENNIS J. REIMER
*General, United States Army
Chief of Staff*

DISTRIBUTION:

To be distributed in accordance with DA Form 12-25-E, block no. 1727, requirements for TM 5-4930-230-23P.

CHANGE
NO. 1

HEADQUARTERS
DEPARTMENT OF THE ARMY
WASHINGTON, D.C., 15 October 1993

Organizational and Direct Support
Maintenance
Repair Parts and Special Tools List

TANK AND PUMP UNIT, LIQUID
DISPENSING FOR TRUCK MOUNTING
MIL DESIGN TANK AND PUMP UNITS
GASOLINE ENGINE DRIVEN
MODEL (97403) 13217E7100
NSN 4930-00-426-9960
ELECTRIC MOTOR DRIVEN
MODEL (97403) 13217E7130
NSN 4930-01-130-7281

DISTRIBUTION STATEMENT A: Approved for public release; distribution is unlimited.

TM 5-4930-230-23P, 28 January 1992, is changed as follows:

1. Title has been changed to read as stated above.
2. Remove and insert pages as indicated below. New or changed text material is indicated by a vertical bar in the margin. An illustration change is indicated by a miniature pointing hand.

Remove pages

i/(ii blank)
Figure 1 (Sheet 1 of 2) and
Figure 1 (Sheet 2 of 2)

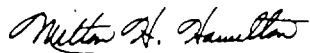
Insert pages

i/(ii blank)
Figure 1 (Sheet 1 of 2) and
Figure 1 (Sheet 2 of 2)

3. Retain this sheet in front of manual for reference purposes.

By Order of the Secretary of the Army:

Official:


MILTON H. HAMILTON
Administrative Assistant to the
Secretary of the Army

05567

GORDON R. SULLIVAN
General, United States Army
Chief of Staff

DISTRIBUTION:

To be distributed in accordance with DA Form 12-25-E, block no. 1727, requirements for TM 5-4930-230-23P.

ORGANIZATIONAL AND DIRECT SUPPORT MAINTENANCE
REPAIR PARTS AND SPECIAL TOOLS LIST

**TANK AND PUMP UNIT, LIQUID DISPENSING
FOR TRUCK MOUNTING MIL DESIGN TANK AND PUMP UNITS
GASOLINE ENGINE DRIVEN
MODEL (97403) 13217E7100, NSN 4930-00-426-9960
ELECTRIC MOTOR DRIVEN
MODEL (97403) 13217E7130, NSN 4930-01-130-7281**

Current as of 2 September 1992

DISTRIBUTION STATEMENT A: Approved for public release; distribution is unlimited

REPORTING ERRORS AND RECOMMENDING IMPROVEMENTS

You can help improve this manual. If you find any mistakes, or if you know of a way to improve these procedures, please let us know. Mail your letter or DA Form 2028 (Recommended Changes to Publications and Blank Forms), or DA Form 2028-2 located in the back of this manual directly to: Commander, US Army Aviation and Troop Command, ATTN: AMSAT-I-MP, 4300 Goodfellow Blvd., St. Louis, MO 63120-1798. You may also submit your recommended changes by E-mail directly to <mpmt%avma28@st-louis-emh7.army.mil>. A reply will be furnished directly to you. Instructions for sending an electronic 2028 maybe found at the back of this manual immediately preceding the hard copy 2028.

	PAGE	FIGURE
Section I	Introduction	1
Section II	Repair Parts List	
Group 01	Pump Unit	
	Hose Assemblies, Elbows and Tee	1-1
	Inlet and Outlet	
	Electrical Accessories	2-1
	Junction Box Assembly	3-1
	Pump Assembly	4-1
	Motor and Base Assembly	5-1
	Filter Separator	6-1
	Liquid Distribution Manifold	7-1
	Static Discharge Reel	8-1
	Nozzle Assembly, Fuel Dispensing	9-1
	Reel Assembly, Fuel Dispensing	10-1
	Frame, Pump Unit	11-1
Group 02	Tanks	
	Tank Assembly, Tiedown Tank and Pump	12-1
	Manhole Cover (Model and 2)	13-1
Group 03	Bulk	Bulk-1
Section III	Special Tools List (Nonapplicable)	
Section IV	Cross Reference Indexes	
	National Stock Number Index	1-1
	Part Number Index	1-4
	Figure and Item Number Index.	1-12

*This manual supersedes TM 5-4930-230-23P, 12 December 1985, including all changes.

**ORGANIZATIONAL AND DIRECT SUPPORT
MAINTENANCE REPAIR PARTS AND SPECIAL TOOLS LIST**

SECTION I. INTRODUCTION

1. SCOPE. This RPSTL lists and authorizes spares and repair parts; special tools; special test, measurement, and diagnostic equipment (TMDE); and other special support equipment required for performance of unit, direct support, and general support maintenance of the Tank and Pump Unit, Liquid Dispensing. It authorizes the requisitioning, issue, and disposition of spares, repair parts and special tools as indicated by the source, maintenance and recoverability (SMR) codes.

2. GENERAL. In addition to this section, Introduction, this Repair Parts and Special Tools List is divided into the following sections:

a. Section II. Repair Parts List. A list of spares and repair parts authorized by this RPSTL for use in the performance of maintenance. The list also includes parts which must be removed for replacement of the authorized parts. Parts lists are composed of functional groups in ascending alphanumeric sequence, with the parts in each group listed in ascending figure and item number sequence. Bulk materials are listed in item name sequence. Repair parts kits are listed separately in their own functional group within Section II. Repair parts for repairable special tools are also listed in this section. Items listed are shown on the associated illustration(s)/figure(s).

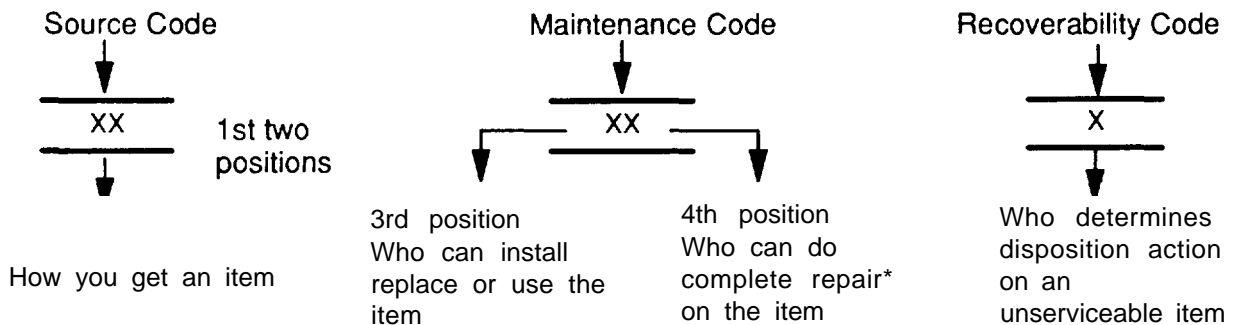
b. Section III. Special Tools List. A list of special too is, special TM DE, and other special support equipment authorized by this RPSTL (as indicated by Basis of Issue (BOI) information in DESCRIPTION AND USABLE ON CODE column) for the performance of maintenance.

c. Section IV. Cross-references Indexes. A list, in National Item identification Number (NIIN) sequence, of all National stock numbered items appearing in the listing, followed by a list in alphanumeric sequence of all part numbers appearing in the listings. National stock numbers and part numbers are cross referenced to each illustration figure and item number appearance. The figure and item number index lists figure and item number in alphanumeric sequence and cross references NSN, CAGEC and part number.

3. EXPLANATION OF COLUMNS (SECTIONS II AND III).

a. ITEM NO. (Column (1)). Indicates the number used to identify items tailed out in the illustration.

b. SMR Code (Column (2)). The Source, Maintenance, and Recoverability (SMR) code is a 5-position code containing supply/requisitioning information, maintenance category authorization criteria, and disposition instruction, as shown in the following breakout:



* Complete Repair: Maintenance capacity, capability, and authority to perform all corrective maintenance tasks of the "Repair" function in a use/user environment in order to restore serviceability to a failed item.

(1) **Source Code.** The source code tells you how to get an item needed for maintenance, repair, or overhaul of an end item/equipment. Explanations of source codes follows:

Code	Explanation
PA PB PC**	Stocked items; use the applicable NSN to request/requisition items with these source codes. They are authorized to the category indicated by the code entered in the 3rd position of the SMR code.
PD PE PF PG	
KD KF KB	
	I *NOTE: Items coded PC are subject to deterioration.
MO — (Made at org AVUM Level) MF — (Made at DS/AVUM Level) MH — (Made at GS Level) ML — (Made at Specialized Repair Activity (SRA)) MD — (Made at Depot)	Items with these codes are not to be requested/requisitioned individually. They must be made from bulk material which is identified by the part number in the DESCRIPTION and USABLE ON CODE (UOC) column and listed in the Bulk Material group of the repair parts list in this RPSTL. If the item is authorized to you by the 3rd position code of the SMR code, but the source code indicates it is made at a higher level, order the item from the higher level of maintenance.
AO — (Assembled by org/AVUM Level) AF — (Assembled by DS/AVIM Level) AH — (Assembled by GS Category) AL — (Assembled by SRA) AD — (Assembled by Depot)	
	Items with these codes are not to be requested/requisitioned individually. The parts that make up the assembled item must be requisitioned or fabricated and assembled at the level of maintenance indicated by the source code. If the 3rd position code of the SMR code authorizes you to replace the item, but the source code indicates the items are assembled at a higher level, order the item from the higher level of maintenance.
XA — Do not requisition "XA" -coded item. Order its next higher assembly. (Also, refer to the NOTE below.)	
XB — If an "XB" item is not available from salvage, order it using the CAGEC and part number given.	
XC — Installation drawing, diagram, instruction sheet, field service drawing, that is identified by Reciprocating Compressor manufacturer's part number.	
XD — Item is not stocked. Order an "XD" -coded item through normal supply channels using the CAGEC and part number given if no NSN is available.	

NOTE

Cannibalization or controlled exchange, when authorized, may be used as a source of supply for items with the above source codes, except for those source coded "XA" or those aircraft support items restricted by requirements of AR 750-1.

(2) **Maintenance Code.** Maintenance codes tells you the level(s) of maintenance authorized to USE and REPAIR support items. The maintenance codes are entered in the third and fourth positions of the SMR code as follows:

(a) The maintenance code entered in the third position tells you the lowest maintenance level authorized to remove, replace, and use an item. The maintenance code entered in the third position will indicate authorization to one of the following levels of maintenance.

Code	Application/Explanation
C —	Crew or operator maintenance done within organizational or aviation unit maintenance.
O —	Organizational or aviation unit category can remove, replace, and use the item.
F —	Direct support or aviation intermediate level can remove, replace, and use the item.
H —	General support level can remove, replace, and use the item.
L —	Specialized repair activity can remove, replace, and use the item.
D —	Depot level can remove, replace, and use the item.

(b) The maintenance code entered in the fourth position tells whether or not the item is to be repaired and identifies the lowest maintenance level with the capability to do complete repair (i.e., perform all authorized repair functions.) NOTE: Some limited repair may be done on the item at a lower level of maintenance, if authorized by the Maintenance Allocation Chart (MAC) and SMR codes. This position will contain one of the following maintenance codes.

Code	Application/Explanation
O —	Organizational or (aviation unit) is the lowest level that can do complete repair of the item.
F —	Direct support or aviation intermediate is the lowest level that can do complete repair of the item.
H —	General Support is the lowest level that can do complete repair of the item.
L —	Specialized repair activity is the lowest level that can do complete repair of the item.
D —	Depot is the lowest level that can do complete repair of the item.
Z —	Nonreparable. No repair is authorized.
B —	No repair is authorized. (No parts or special tools are authorized for the maintenance of a "B" coded item). However, the item may be reconditioned by adjusting, lubricating, etc., at the user level.

(3) **Recoverability Code.** Recoverability codes are assigned to items to indicate the disposition action on unserviceable items. The recoverability code is entered in the fifth position of the SMR Code as follows:

Recoverability

Codes	Application/Explanation
Z —	Nonreparable item. When unserviceable, condemn and dispose of the item at the level of maintenance shown in 3d position of SMR Code.
O —	Reparable item. When not economically reparable, condemn and dispose of the item at organizational or aviation unit level
F —	Reparable item. When uneconomically reparable, condemn and dispose of the item at the direct support or aviation intermediate level
H —	Reparable item. When uneconomically reparable, condemn and dispose of the item at the general support level.
D —	Reparable item. When beyond lower level repair capability, return to depot. Condemnation and disposal of item not authorized below depot level.
L —	Reparable item. Condemnation and disposal not authorized below specialized repair activity (SRA).
A —	Item requires special handling or condemnation procedures because of specific reasons (e.g., precious metal content, high dollar value, critical material, or hazardous material). Refer to appropriate manuals/directives for specific instructions.

c. CAGEC (Column (3)). The Commercial and Government Entity Code (CAGEC) is a 5-digit numeric code which is used to identify the manufacturer, distributor, or Government agency, etc., that supplies the item.

d. PART NUMBER (Column (4)). Indicates the primary number used by the manufacturer, (individual, company, firm, corporation, or Government activity), which controls the design and characteristics of the item by means of its engineering drawings, specifications standards, and inspection requirements to identify an item or range of items.

NOTE

When you use an NSN to requisition an item, the item you receive may have a different part number from the part ordered.

e. DESCRIPTION AND USABLE ON CODE (UOC) (Column (5)). This column includes the following information:

- (1) The Federal item name and, when required, a minimum description to identify the item.
- (2) The physical security classification of the item is indicated by the parenthetical entry, e.g., PhySec C1 – Confidential, Phy Sec C1 (S) – Secret, Phy Sec C1 (T) – Top Secret.
- (3) Items that are included in kits and sets are listed below the name of the kit or set.
- (4) Spare/repair parts that make up an assembled item are listed immediately following the assembled item line entry.
- (5) Part numbers for bulk materials are referenced in this column in the line item entry for the item to be manufactured/fabricated.
- (6) When the item is not used with all serial numbers of the same model, the effective serial numbers are shown on the last line(s) of the description (before UOC).

(7) The usable encode, when applicable (see paragraph 5, Special information).

(8) In the Special Tools List section, the basis of issue (BOI) appears as the last line(s) in the entry for each special tool, special TMDE, and other special support equipment. When density of equipments supported exceeds density spread indicated in the basis of issue, the total authorization is increased proportionately.

(9) The statement "END OF FIGURE" appears just below the last item description in Column 5 for a given figure in both Section II and Section III.

(10) The indenture, shown as dots appearing before the repair part, indicates that the item is a repair part of the next higher assembly.

f. **QTY (Column (6)).** The QTY (quantity per figure column) indicates the quantity of the item used in the breakout shown on the illustration figure, which is prepared for a functional group, subfunctional group, or an assembly. A "V" appearing in this column in lieu of a quantity indicates that the quantity is variable and may vary from application to application.

4. EXPLANATION OF COLUMNS (SECTION IV).

a. NATIONAL STOCK NUMBER (NSN) INDEX.

(1) **STOCK NUMBER column.** This column lists the NSN by National item identification number (NIIN) sequence. The NIIN consists of the last nine digits of the NSN, i.e.

NSN
5305-01-574-1467
NIIN

When using this column to locate an item, ignore the first 4 digits of the NSN. However, the complete NSN should be used when ordering items by stock number.

(2) **FIG. column.** This column lists the number of the figure where the item is identified/located. The figures are in numerical order in Section II and Section III.

(3) **ITEM column.** The item number identifies the item associated with the figure listed in the adjacent FIG. column. This item is also identified by the NSN listed on the same line.

b. **PART NUMBER INDEX.** Part numbers in this index are listed by part number in ascending alphanumeric sequence (i e., vertical arrangement of letter and number combination which places the first letter or digit of each group in order A through Z, followed by the numbers 0 through 9 and each following letter or digit in like order).

(1) **CAGEC column.** The Commercial and Government Entity Code (CAGEC) is a 5-digit numeric code used to identify the manufacturer, distributor, or Government agency, etc., that supplies the item.

(2) **PART NUMBER column.** Indicates the primary number used by the manufacturer (individual, firm, corporation, or Government activity), which controls the design and characteristics of the item by means of its engineering drawings, specifications standards, and inspection requirements to identify an item or range of items.

(3) **STOCK NUMBER column.** This column lists the NSN for the associated part number and manufacturer identified in the PART NUMBER and CAGEC columns to the left.

(4) **FIG. column.** This column lists the number of the figure where the item is identified/located in Sections II and III.

(5) **ITEM column.** The item number is that number assigned to the item as it appears in the figure referenced in adjacent figure number column.

c. FIGURE AND ITEM NUMBER INDEX.

(1) **FIG. column.** This column lists the number of the figure where the item is identified/located in Section II and III.

(2) **ITEM column.** The item number is that number assigned to the item as it appears in the figure referenced in the adjacent figure number column.

(3) **STOCK NUMBER column.** This column lists the NSN for the item.

(4) **CAGEC column.** The Commercial and Government Entity Code (CAGEC) is a 5-digit numeric code used to identify the manufacturer, distributor, or Government agency, etc., that supplies the item.

(5) **PART NUMBER column.** Indicates the primary number used by the manufacturer (individual, firm, corporation, or Government activity), which controls the design and characteristics of the item by means of its engineering drawings, specifications standards, and inspection requirements to identify an item or range of items.

5. SPECIAL INFORMATION.

a. USABLE ON CODE. The usable on code appears in the lower corner of the Description column heading. Usable on codes are shown as "UOC:" in the Description Column (justified left) on the last line applicable item description/nomenclature. Uncoded items are applicable to all models. Identification of the usable on codes used in this RPSTL are:

Code	Used On
BXQ	Model 13217 E7100 (Gasoline Engine Driven)
DPF	Model 13217 E7130 (Electric Motor Driven)

b. ASSOCIATED PUBLICATIONS. The publications listed below pertain to the Tank and Pump Unit and its components.

Publication	Short Title
TM 5-4930-230-13	Maintenance Manual for Tank and Pump Unit, Liquid Dispensing
TM 5-4930-230-10-HR	Hand Receipt for Tank and Pump Unit, Liquid Dispensing
LO 5-2805-257-12	Lubrication Order for Engine Lubrication

6. HOW TO LOCATE REPAIR PARTS.

a. When National Stock Number or Part Number Is NOT Known.

(1) **First.** Using the table of contents, determine the assembly group or subassembly group to which the item belongs. This is necessary since figures are prepared for assembly groups and subassembly groups, and listings are divided into the same groups.

(2) Second. Find the figure covering the assembly group or subassembly group to which the item belongs.

(3) Third. Identify the item on the figure and note the item number.

(4) Fourth. Refer to the Repair Parts List for the figure to find the part number for the item number noted on the figure.

(5) Fifth. Refer to the Part Number Index to find the NSN, if assigned.

b. When National Stock Number or Part Number Is Known.

(1) First. Using the Index of National Stock Numbers and Part Numbers, find the pertinent National Stock Number or Part Number. The NSN index is in National Item Identification Number (NIIN) sequence (see c-4a.(1)). The part numbers in the Part Number index are listed in ascending alphanumeric sequence (see paragraph c-4.b). Both indexes cross-reference you to the illustration figure and item number of the item you are looking for.

(2) Second. After finding the figure and item number, verify that the item is the one you are looking for, then locate the item number in the repair parts list for the figure.

7. ABBREVIATIONS. Abbreviations used in this manual are listed in MIL-STD-12.

SECTION II

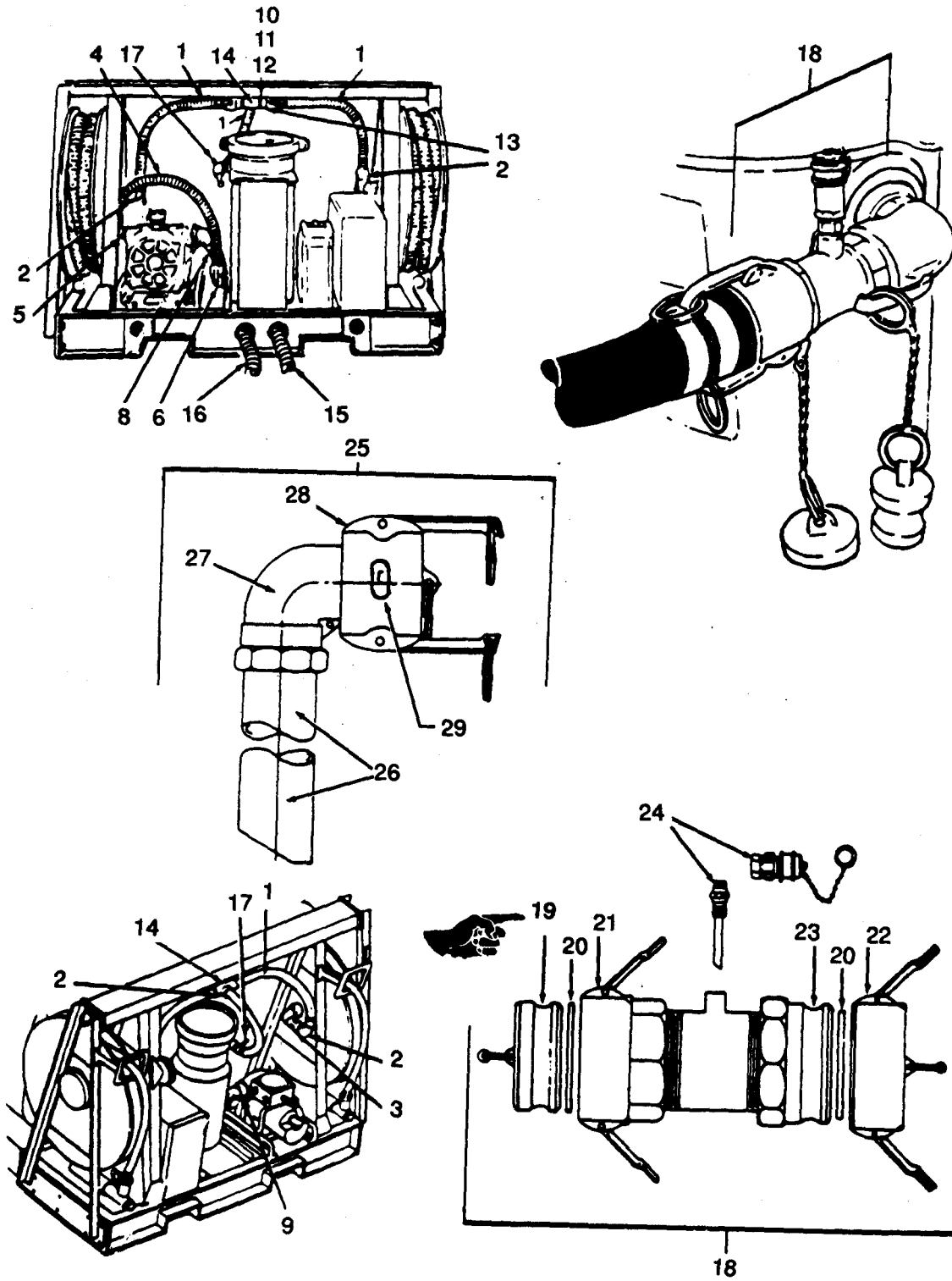


Figure 1. Hose Assemblies, Elbow and Tee Inlet and Outlet (Sheet 1 of 2).

SECTION II

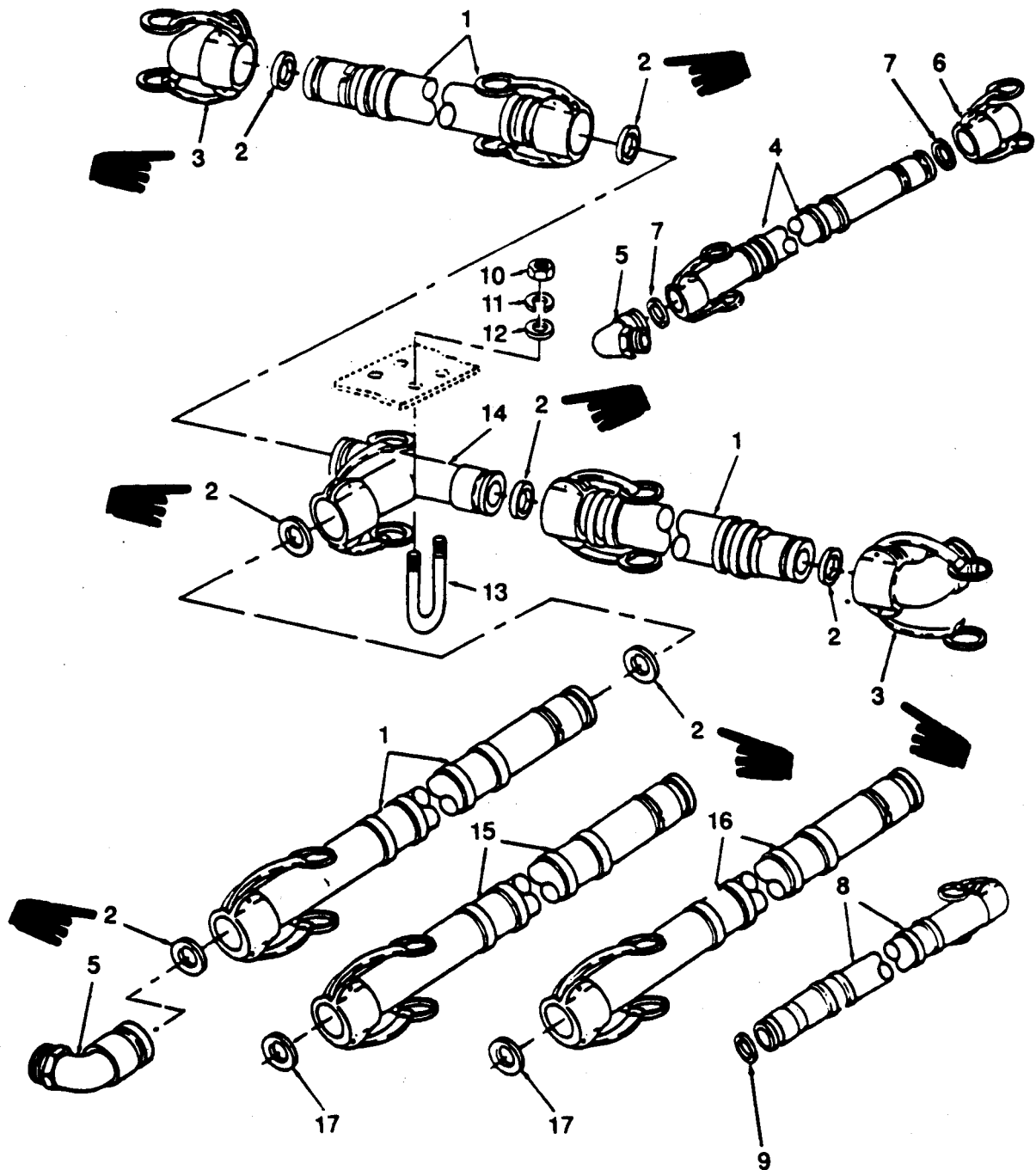


Figure 1. Hose Assemblies, Elbows and Tee Inlet and Outlet (Sheet 2 of 2).

SECTION II (1) ITEM NO	(2) SMR CODE	(3) CAGEC	TM5-4930-230-23P (4) PART NUMBER	(5) DESCRIPTION AND USABLE ON CODES (UOC)	(6) QTY
GROUP 01 PUMP UNIT					
FIG. 1 HOSE ASSEMBLIES, ELBOWS AND TEE INLET AND OUTLET					
1	XBOFF PAOZZ	97403 81349	13217E7105 M370A05B2A0290	PUMPING UNIT (EMD) HOSEASSEMBLY,NONME 1.5 IN.X 34.0 IN	1 3
2	PAOZZ	96906	MS27030-5	GASKET	2
3	PBOZZ	97403	13217E7125	COUPLING HALF,QUICK	1
4	PAOZZ	81349	M370A05B2A390	HOSE ASSEMBLY,NONME	1
5	PBOZZ	97403	13217E6306	COUPLING HALF,QUICK	1
6	PBOZZ	97403	13217E7125	COUPLING HALF,QUICK	1
7	PAOZZ	96906	MS27030-5	GASKET	2
8	PAOZZ	81349	M370B06B2A104	HOSE ASSEMBLY,NONME	1
9	PAOZZ	96906	MS27030-6	GASKET	1
10	PAOZZ	96906	MS51967-9	NUT,PLAIN,HEXAGON	4
11	PAOZZ	96906	MS35338-46	WASHER,LOCK	4
12	PAOZO	96906	MS27183-14	WASHER,FLAT	4
13	PBOZA	97403	13217E7123	BOLT,U	2
14	PBOZZ	97403	13217E7122	COUPLING HALF	1
15	PAOZZ	81349	M370B06B2A0890	HOSE ASSEMBLY,NONME TANK TO MANIFOLD,90.0 IN.LG	1
16	PAOZZ	81349	M370B06B2A0260	HOSE ASSEMBLY,NONME TANK TO MANIFOLD,26.0 IN.LG	1
17	PBOZZ	96906	MS27030-6	GASKET	2
18	PAOZZ	97403	13220E9406-3	ADAPTER,ASSEMBLY,WA	1
19	PAOZZ	96906	MS27029-9	PLUG,QUICK DISCONNE	1
20	PAOZO	96906	MS27024-9	COUPLING HALF,QUICK	1
21	PAOZZ	96906	MS27030-5	GASKET	2
22	PAOZZ	96906	MS27028-9	CAP,QUICK DISCONNEC	1
23	PAOZZ	96906	MS27020-9	COUPLING HALF,QUICK	1
24	PAOZZ	97403	13220E9914-3	PROBE ASSY,WATER DE	1
25	XDOZZ	97403	13217E2987	DRUM UNLOADER,STUB	1
26	PAOZZ	97403	13217E2985	STUB,SUCTION	1
27	PAOZZ	97403	13217E2983	COUPLING HALF,QUICK	1
28	PAOZO	96906	MS27028-9	CAP,QUICK DISCONNEC	1
29	PAOZZ	96906	MS27030-5	GASKET	1

END OF FIGURE

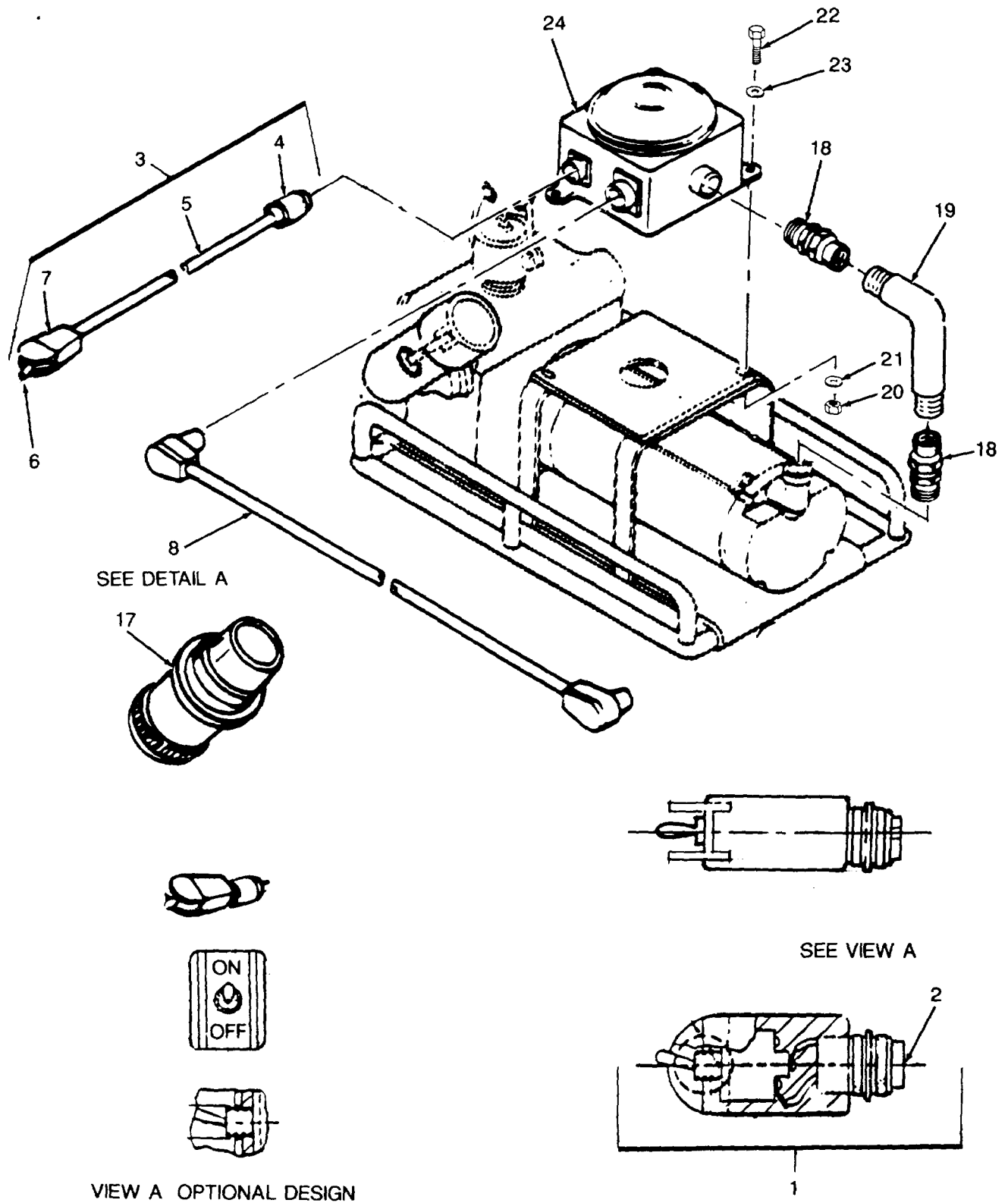


Figure 2. Electrical Accessories (Sheet 1 of 2)

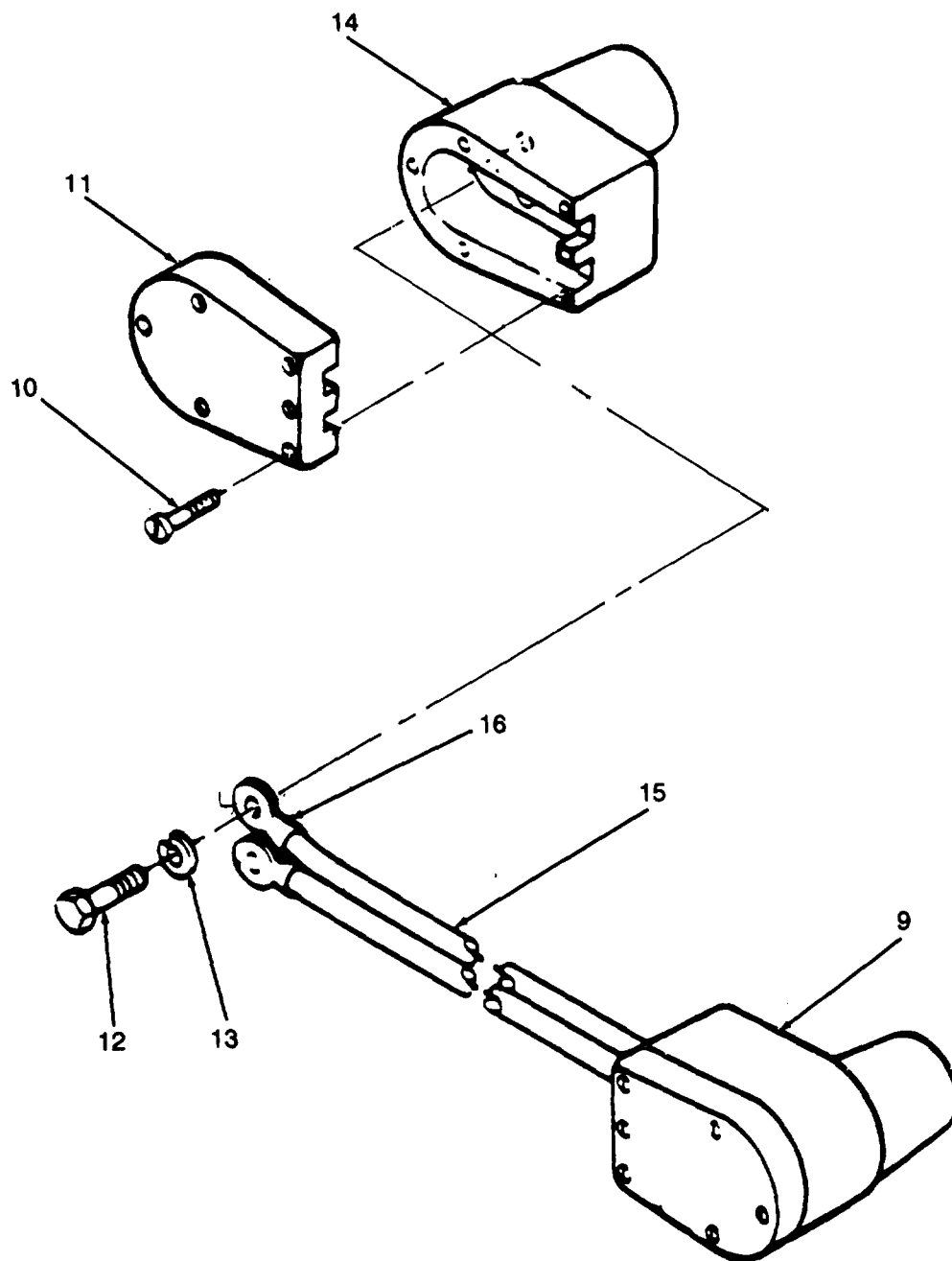


Figure 2. Electrical Accessories. (Sheet 2 of 2)

SECTION II (1)	ITEM (2)	(3)	TM5-4930-230-23P (4)	(5)	(6)
NO	SMR CODE	CAGEC	PART NUMBER	DESCRIPTION AND USABLE ON CODES (UOC)	QTY
				GROUP 01 PUMP UNIT	
				FIG. 2 ELECTRICAL ACCESSORIES	
1	PFOFH XDOZZ	97403 97403	13217E7135 13222E9859	PUMP UNIT,CENTRIFUG SWITCH ASSY, OPTION MAY REPLACE CABLE ASSY, SWITCH, 13217E2964 (97403)	1 1
2	XAOZA	96906	MS3456W16S-4P	CONNECTOR, PLUG, ELEC UOC:DPF	1
3	PAOOO	97403	13217E2964	CABLE ASSEMBLY-SWIT	1
4	XAOZZ	96906	MS3106F16S4P	CONNECTOR, PLUG	1
5	XAOZZ	97403	13217E2964-4	CABLE, ELECTRICAL	480
6	XAOZZ	96906	MS24523-22	SWITCH, TOGGLE	1
7	XAOZZ	97403	13217E2964-1	GUARD, TOGGLE	1
8	PAOOZ	19207	11682336-1	CABLE ASSEMBLY,POWE	1
9	PAOOZ	19207	11682338	CONNECTOR, PLUG, ELEC	2
10	PAOZZ	96906	MS35226-50	SCREW, MACHINE	6
11	XDOZZ	19207	11682344	COVER, PLUG	1
12	PAOZZ	96906	MS90727-58	SCREW, CAP, HEXAGON H	2
13	PAOZZ	96906	MS35338-46	WASHER, LOCK	2
14	XDOZZ	19207	11682339	CONNECTOR BODY	1
15	XAOZZ	19207	11682337-1	CABLE, WIRING	1
16	PAOZZ	96906	MS20659-120	TERMINNAL, LUG	4
17	PBOZZ	19207	11677570	ADAPTER, CONNECTOR	1
18	PBOZZ	15235	UNY105SA	UNION, ELECTRICAL CO	2
19	XDOZZ	97403	13217E7166	ELBOW, 90 DEGREE	1
20	PAOZZ	96906	MS51967-8	NUT, PLAIN, HEXAGON	2
21	PAOZZ	96906	MS35338-46	WASHER, LOCK	2
22	PAOZZ	96906	MS90728-65	SCREW, CAP, HEXAGON H	2
23	PAOZZ	96906	MS27183-14	WASHER, FLAT	2
24	XDOOO	97403	13227E6652	JUNCTION BOX ASSY	1

END OF FIGURE

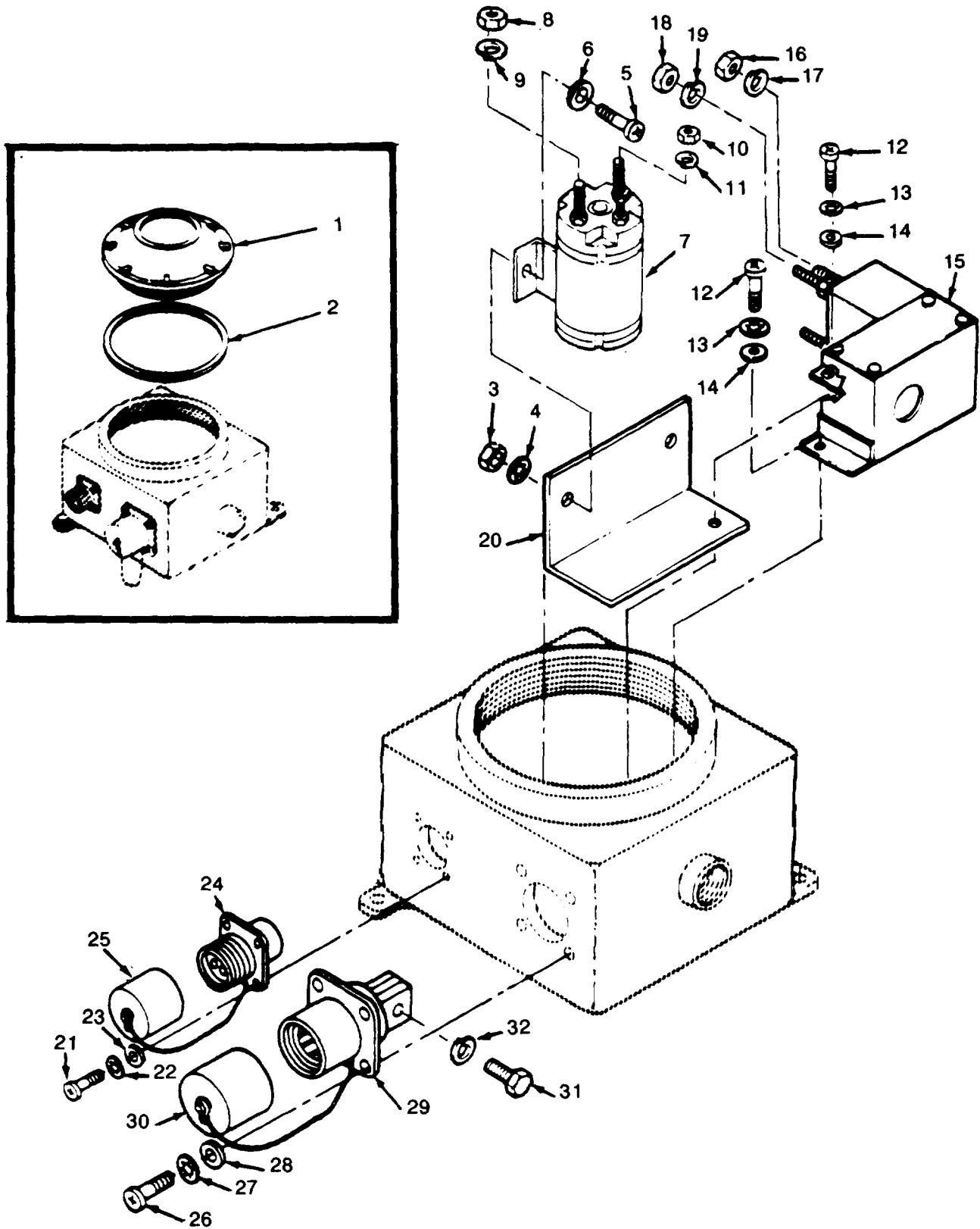


Figure 3. Junction Box Assembly (Sheet 1 to 2)

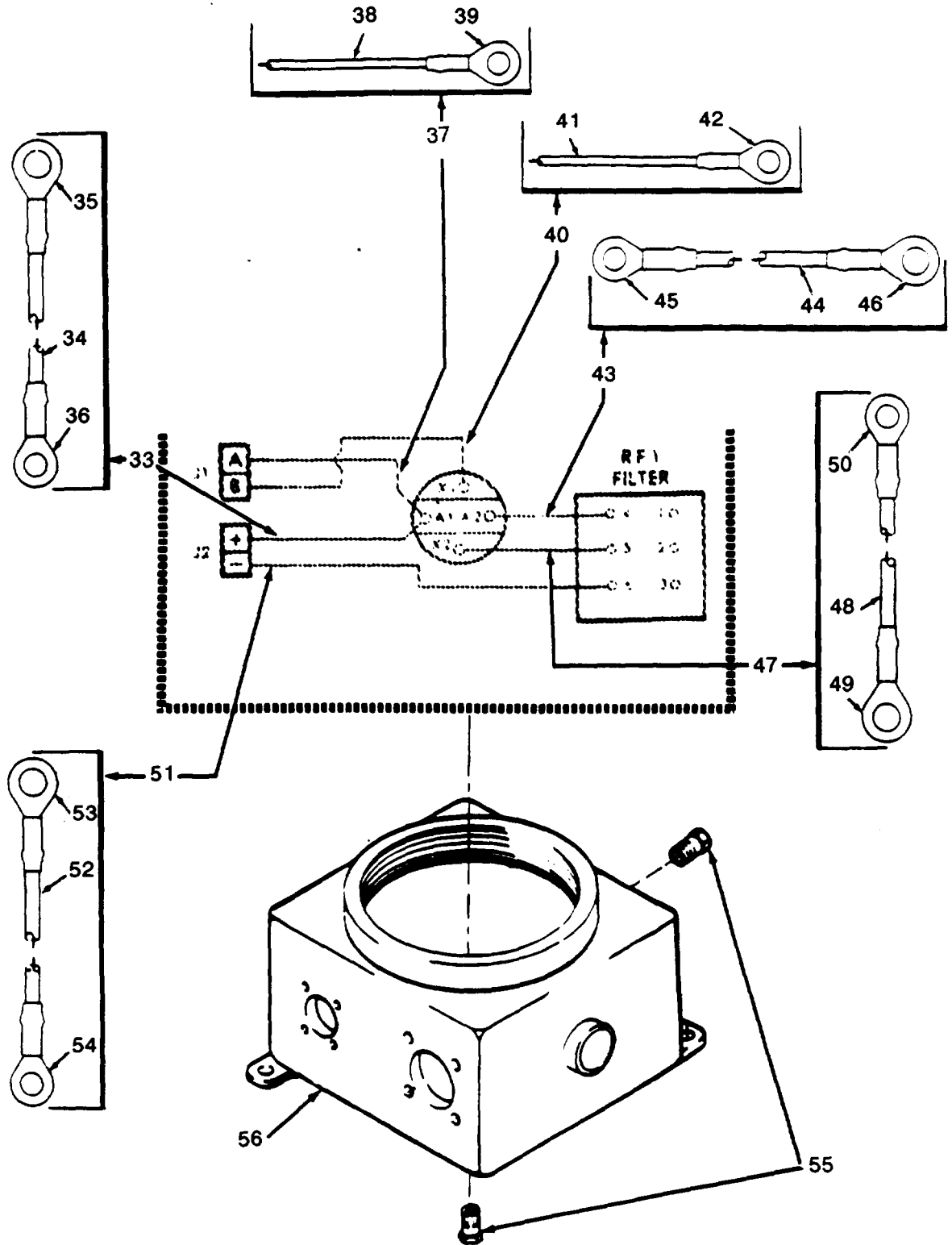


Figure 3. Junction Box Assembly (Sheet 2 of 2)

SECTION II (1) ITEM NO	(2) SMR CODE	(3) CAGEC	TM5-4930-230-23P (4) PART NUMBER	(5) DESCRIPTION AND USABLE ON CODES (UOC)	(6) QTY
GROUP 01 PUMP UNIT					
FIG. 3 JUNCTION BOX ASSEMBLY					
1	XDOZZ	15235	GUB0101	COVER, THREADED	1
2	PBOZZ	15235	GASK925	PACKING, PERFORMED	1
3	PAOZZ	96906	MS35650-302	NUT, PLAIN, HEXAGON	2
4	PAOZO	96906	MS35333-39	WASHER, LOCK	2
5	PAOZZ	96906	MS35207-264	SCREW, MACHINE	2
6	PAOZZ	96906	MS27183-42	WASHER, FLAT	2
7	PAOZZ	97403	13217E7154	RELAY, SPST, K1	1
8	PAOZZ	96906	MS35690-524	NUT, PLAIN, HEXAGON	4
9	PAOZZ	96906	MS35338-140	WASHER, LOCK	4
10	PAOZZ	96906	MS35650-304	NUT, PLAIN, HEXAGON	4
11	PAOZZ	96906	MS35338-138	WASHER, LOCK	2
12	PAOZZ	96906	MS35207-264	SCREW, MACHINE	2
13	PAOZO	96906	MS35333-39	WASHER, LOCK	3
14	PAOZZ	96906	MS27183-42	WASHER, FLAT	3
15	PBOZZ	97403	13217E7174	FILTER, RADIO FREQUE	1
16	PAOZZ	96906	MS35649-2252	NUT, PLAIN, HEXAGON	4
17	PAOZZ	96906	MS35338-44	WASHER, LOCK	4
18	PAOZZ	96906	MS35649-282	NUT, PLAIN, HEXAGON	2
19	PAOZZ	96906	MS35338-42	WASHER, LOCK	2
20	XDOZZ	97403	13227E9783	BRACKET, MOUNTING	1
21	PAOZZ	96906	MS35206-218	SCREW, MACHINE	4
22	PAOZZ	96906	MS35333-36	WASHER, LOCK	4
23	PAOZZ	96906	MS27183-4	WASHER, FLAT	4
24	PBOZZ	96906	MS3452W16S-4S	CONNECTOR, RECEPTACL	1
25	XDOZZ	96906	MS25043-16DA	COVER, ELECTRICAL CO	1
26	PAOZZ	96906	MS35207-264	SCREW, MACHINE	4
27	PAOZO	96906	MS35333-39	WASHER, LOCK	4
28	PAOZZ	96906	MS27183-42	WASHER, FLAT	4
29	PBOZZ	96906	MS52131-1	CONNECTOR, PLUG, ELEC J2	1
				RECEPTACLE	
30	PAOZZ	19207	11675004	CAP, PROTECTIVE, DUST	1
31	PAOZZ	96906	MS90727-57	SCREW, CAP, HEXAGON H	2
32	PAOZZ	96906	MS35338-46	WASHER, LOCK	2
33	AOOOO	97403	13217E7141-3	LEAD, ELECTRICAL	1
34	MOOZZ	81349	TYPE EE-8	WIRE, ELECTRICAL MFG FROM M16878/5BNL9(81349) 6 IN REQUIRED	1
35	PAOZZ	96906	MS25036-118	TERMINAL, LUG	1
36	PAOZZ	96906	MS25036-117	TERMINAL, LUG	1
37	AOOOO	97403	13217E7141-1	LEAD, ELECTRICAL	1
38	MOOZZ	81349	TYPE EE-16	WIRE, ELECTRICAL MFG FROM M16878/5BJE9 (81349) 6 IN REQUIRED	1
39	PAOZZ	96906	MS25036-109	TERMINAL, LUG	1
40	AOOOZ	97403	13217E7141-2	LEAD, ELECTRICAL	1
41	MOOZZ	81349	TYPE EE-16	WIRE, ELECTRICAL MFG FROM M16878/5BJE9 (81349) 6 IN REQUIRED	1
42	PAOZZ	96906	MS25036-108	TERMINAL, LUG	1
43	AOOOO	97403	13217E7141-5	LEAD, ELECTRICAL	1
44	MOOZZ	81349	TYPE EE-8	WIRE, ELECTRICAL MFG FROM	1

SECTION II					
(1)	(2)	(3)	(4)	(5)	(6)
ITEM	SMR		PART		
NO	CODE	CAGEC	NUMBER	DESCRIPTION AND USABLE ON CODES (UOC)	QTY
				M16878/5BNL9 (81349) 6 IN REQUIRED	
45	PAOZZ	96906	MS25036-117	TERMINAL,LUG	1
46	PAOZZ	96906	MS25036-116	TERMINAL,LUG	1
47	AOOOO	97403	13217E7141-6	LEAD, ELECTRICAL	1
48	MOOZZ	81349	TYPE EE-16	WIRE, ELECTRICAL MFG FROM	1
				M16878/5BJE9 (81349) 6 IN REQUIRED	
49	PAOZZ	96906	MS25036-108	TERMINAL,LUG	1
50	PAOZZ	96906	MS25036-153	TERMINAL,LUG	1
51	AOOOO	97403	13217E7141-4	LEAD, ELECTRICAL	1
52	MOOZZ	81349	TYPE EE-8	WIRE, ELECTRICAL MFG FROM	1
				M16878/5BNL9 (81349) 6 IN REQUIRED	
53	PAOZZ	96906	MS25036-118	TERMINAL,LUG	1
54	PAOZZ	96906	MS25036-116	TERMINAL,LUG	1
55	XDOZZ	81349	M286755B03	FITTING, BREATHER	2
56	XDOZZ	97403	13217E7132	JUNCTION BOX	1

END OF FIGURE

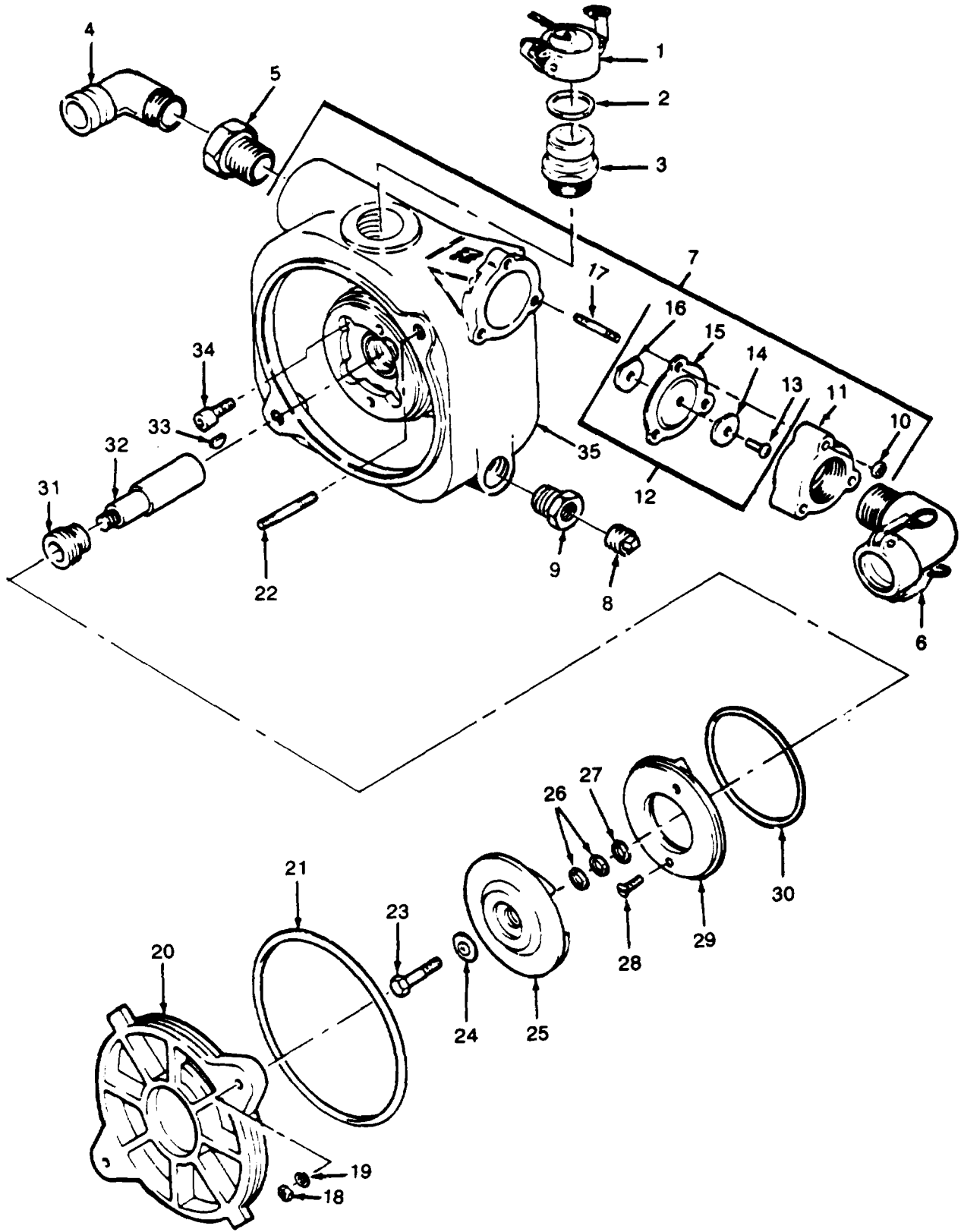


Figure 4. Pump Assembly (Sheet 1 of 2)

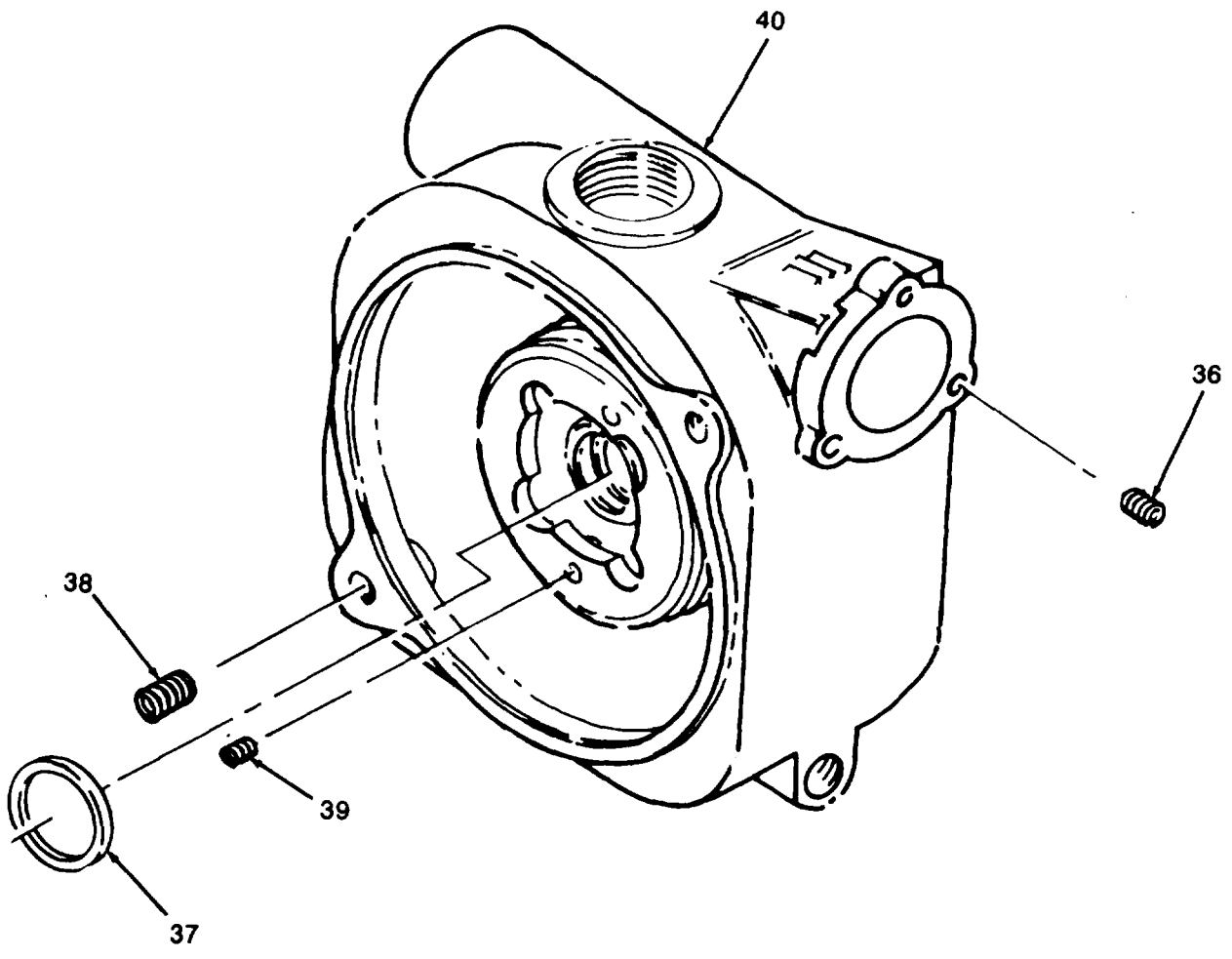


Figure 4. Pump Assembly (Sheet 2 of 2)

SECTION II (1) ITEM NO	(2) SMR CODE	(3) CAGEC	TM5-4930-230-23P (4) PART NUMBER	(5) DESCRIPTION AND USABLE ON CODES (UOC)	(6) QTY
GROUP 01 PUMP UNIT					
FIG. 4 PUMP ASSEMBLY					
1	PAOZZ	96906	MS27028-11	CAP, QUICK DISCONN	1
2	PAOZZ	96906	MS27030-6	GASKET	1
3	PAOZZ	96906	MS27022-11	COUPLING HALF, QUICK	1
4	PAOZZ	97403	13217E6306	COUPLING HALF, QUICK	1
5	PAOZZ	96906	MS14315-22X	BUSHING, PIPE	1
6	PAOZZ	97403	13217E7129	COUPLING HALF, QUICK	1
7	PBFFF	97403	13217E7170	PUMP ASSEMBLY	1
8	PAOZZ	81348	WW-P-471 AACBCC	PLUG, PIPE	1
9	PAOZZ	81348	WW-P-471 BDBCDC	BUSHING, PIPE	1
10	PAOZZ	96906	MS51968-5	NUT, PLAIN, HEXAGON	3
11	XDOZZ	97403	13200E8814	FLANGE, PIPE	1
12	PAOZZ	97403	13200E8810	FLAPPER, FOOT VALVE	1
13	PAOZZ	96906	MS35214-69	SCREW, MACHINE	1
14	XAOZZ	97403	13200E8812	WEIGHT, CHECK VALVE,	1
15	PAOZZ	97403	13200E8813	GASKET	1
16	XAOZZ	97403	13200E8811	WEIGHT, CHECK VALVE	1
17	PAFZZ	96906	MS51864-103-18	STUD	3
18	PAOZZ	96906	MS51968-14	NUT, PLAIN, HEXAGON	2
19	PAOZZ	96906	MS27183-18	WASHER, FLAT	2
20	XDOZZ	97403	13200E8809	VOLUTE, PUMP	1
21	KFFZO	96906	MS29513-273	PACKING, PREFORMED PART OF KIT P/N 78678SA	1
22	PAOZZ	96906	MS51864-106-20	STUD, PLAIN	2
23	PAFZZ	96906	MS90726-43	BOLT, MACHINE	1
24	KFFZZ	97403	13200E8802	RETAINER, PACKING PART OF KIT P/N 78678SA	1
25	PBFZZ	97403	13217E7167	IMPELLER, PUMP, CENTR	1
26	PBFZZ	97403	13200E8807-1	SHIM	V
27	PBFZZ	97403	13200E8807-2	WASHER, FLAT	V
28	PAFZZ	96906	MS35198-73	SCREW, MACHINE	2
29	PBFZZ	97403	13217E7168	WEAR, PLATE	1
30	KFFZZ	96906	MS29513-253	PACKING, PREFORMED PART OF KIT P/N 78678SA	1
31	KFFZZ	97403	13200E8806	SEAL, SHAFT PART OF KIT P/N 78678SA	1
32	XDFZZ	97403	13200E8804	SHAFT, SHOULDERED	1
33	PAFZZ	96906	MS35756-34	KEY, WOODRUFF	1
34	KFFZZ	97403	13200E8861	SCREW, CAP, SOCKET HE PART OF KIT P/N 7878SA	4
35	XDFZZ	97403	13200E8803	HOUSING, LIQUID PUMP	1
36	PAFZZ	96906	MS122122	INSERT, SCREW THREAD	3
37	XDOZZ	97403	13229E5271	DEFLECTOR, LIQUID	1
38	PAFZZ	96906	MS122125	INSERT, SCREW THR	2
39	PAFZZ	96906	MS122121	INSERT, SCREW THREAD	2
40	XAFZZ	97403	13200E8803-1	CASE, PUMP	1
	PAFZZ	05748	78678SA	PARTS KIT, CENTRIFUG	1
				PACKING, PREFORMED (1) 4-21	
				PACKING, PREFORMED (1) 4-30	

SECTION II		TM5-4930-230-23P			
(1)	(2)	(3)	(4)	(5)	(6)
ITEM NO	SMR CODE	CAGEC	PART NUMBER	DESCRIPTION AND USABLE ON CODES (UOC)	QTY
				RETAINER, PACKING (1) 4-24	
				SCREW, CAP, SOCKET HE(4) 4-34	
				SEAL, SHAFT (1) 4-31	
END OF FIGURE					

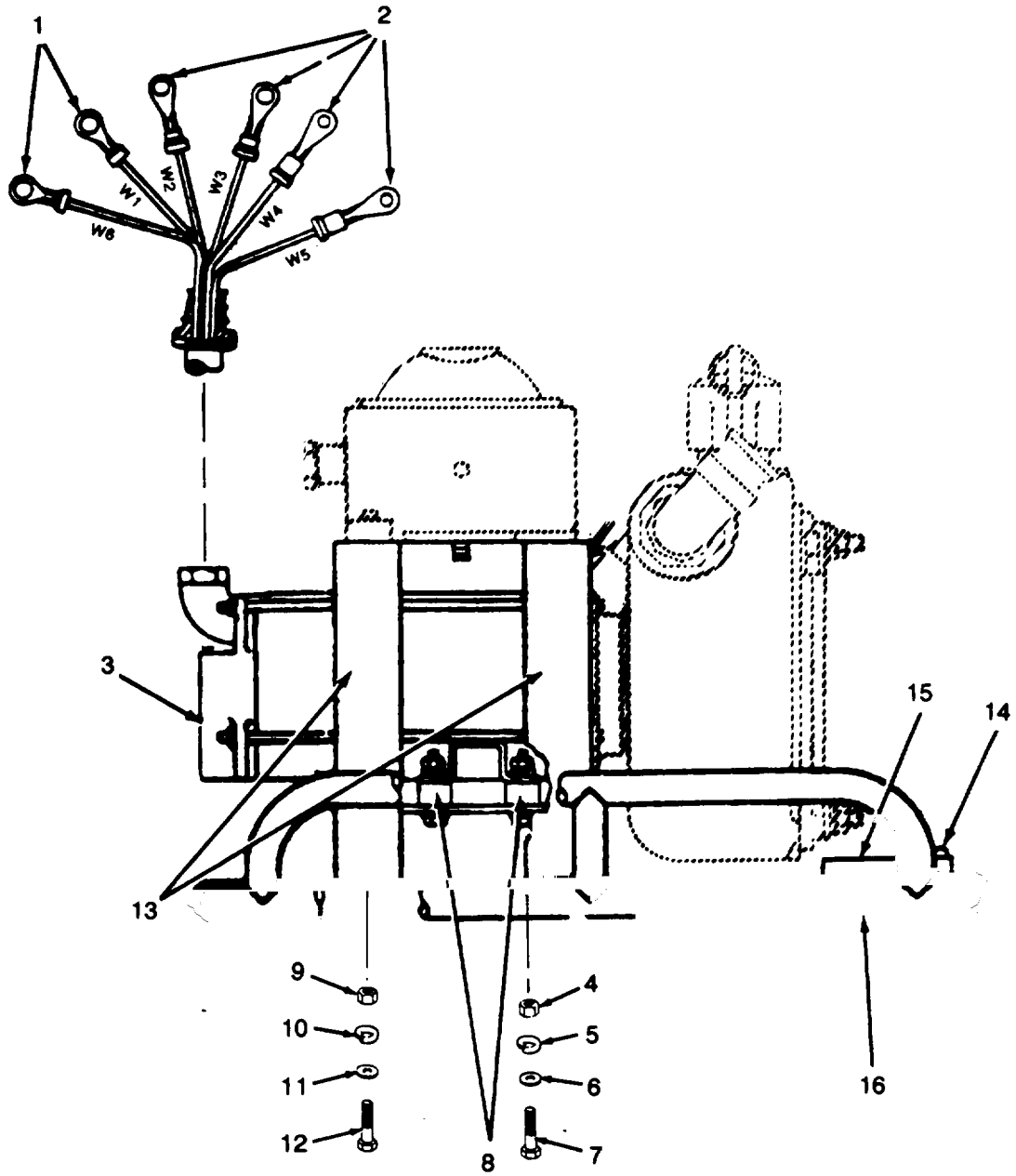


Figure 5. Motor and Base Assembly

SECTION II (1)	SMR (2)	CAGEC (3)	TM5-4930-230-23P (4) PART NUMBER	DESCRIPTION AND USABLE ON CODES (UOC) (5)	QTY (6)
GROUP 01 PUMP UNIT					
FIG. 5 MOTOR AND BASE ASSEMBLY					
1	PAFZZ	96906	MS25036-149	TERMINAL,LUG	2
2	PAFZZ	96906	MS25036-157	TERMINAL,LUG	4
3	PBFZZ	97403	13217E7131	MOTOR,DIRECT CURREN	1
4	PAFZZ	96906	MS51967-5	NUT,PLAIN,HEXAGON	4
5	PAFZZ	96906	MS35338-45	WASHER,LOCK	4
6	PAFZZ	96906	MS27183-12	WASHER,FLAT	4
7	PAFZZ	96906	MS90725-39	BOLT,MACHINE	4
8	XDFZZ	97403	13222E9858	SPACER, MOTOR	2
9	PAOZZ	96906	MS51967-8	NUT,PLAIN,HEXAGON	4
10	PAOZZ	96906	MS35338-46	WASHER,LOCK	4
11	PAOZZ	96906	MS27183-14	WASHER,FLAT	4
12	PAFZZ	96906	MS90728-61	SCREW,CAP,HEXAGON H	4
13	XDFZZ	97403	13217E7136	BRACKET,MOTOR MOUNT	1
14	PAOZZ	96906	MS20600AD6W4	RIVET,BLIND	4
15	XCFZZ	97403	13217E7137	PLATE, INDENT. (EMD)	1
16	PBFZZ	97403	13217E7121	BASE,PUMP ENGINE MO	1
END OF FIGURE					

5
6 THRU 10

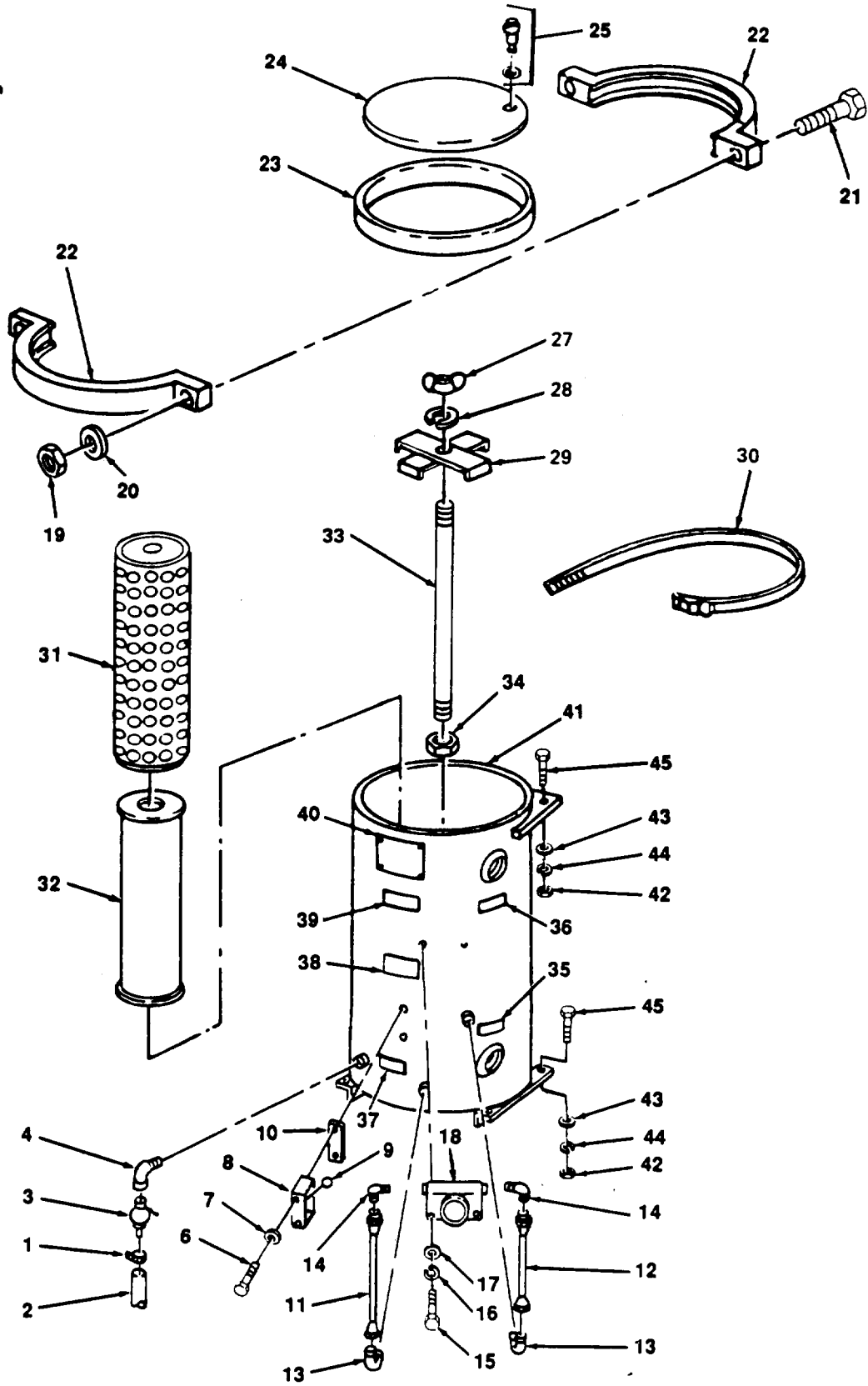
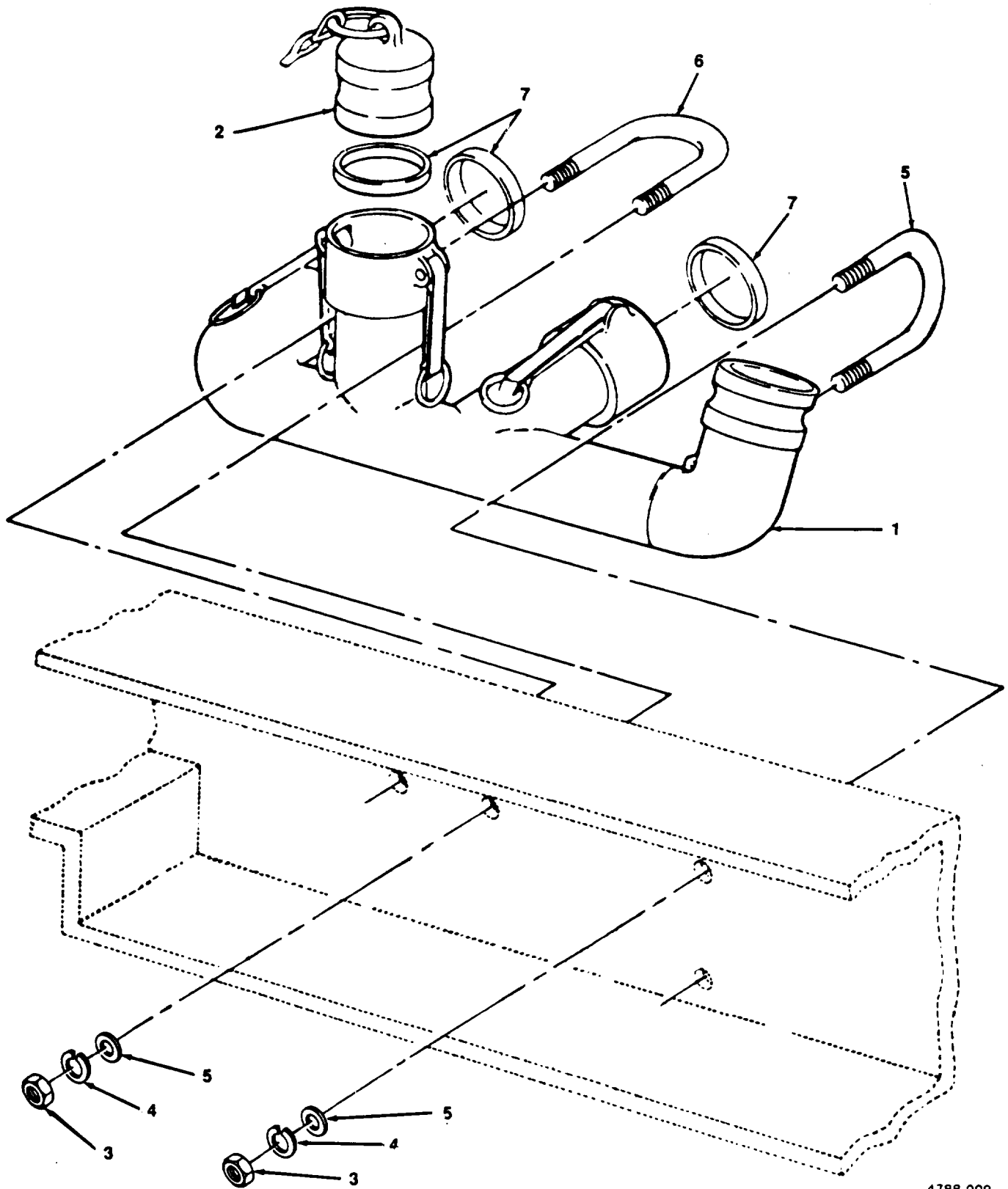


Figure 6. Filter Separator.

SECTION II (1) ITEM NO	(2) SMR CODE	(3) CAGEC	TM5-4930-230-23P (4) PART NUMBER	(5) DESCRIPTION AND USABLE ON CODES (UOC)	(6) QTY
GROUP 01 PUMP UNIT					
FIG. 6 FILTER SEPARATOR					
1	PBOOO	97403	13217E7140	FILTER-SEPARATOR, LI	1
	PAOZZ	81348	WWC440TYPEE5-8	CLAMP, HOSE	1
2	PBOZZ	81349	MIL-H-13444	HOSE, NONMETALLIC	36
3	PAOZZ	97403	13217E6309	COCK, DRAIN	1
4	PAOZZ	97403	13218E0114-15	ELBOW, PIPE	1
5	PBOZZ	97403	13217E5360	GLASS, LIQUID SIGHT	1
6	PAOZO	96906	MS51957-85	SCREW, MACHINE	2
7	PAOZZ	96906	MS15795-810	WASHER, FLAT	2
8	PBOZZ	97403	13217E5361	INDICATOR, SIGHT, LIQ	1
9	PAOZZ	97403	13217E5362	FLOAT, SIGHT INDICAT	1
10	PAOZZ	97403	13217E5363	GASKET	1
11	PAOZZ	97403	13217E5365-1	TUBE ASSEMBLY, METAL 5/16 IN. X 6.0 IN. LG	1
12	PAOZZ	97403	13217E5365-7	TUBE ASSEMBLY, METAL 5/16 IN. X4.0 IN. LG	1
13	PAOZZ	96906	MS20822-5-4D	ELBOW, PIPE TO TUBE 1/4 IN. X 5/16 IN	2
14	PAOZZ	96906	MS20822-5D	ELBOW, PIPE TO TUBE 1/8 IN. X 5/16 IN	2
15	PAOZO	96906	MS51957-85	SCREW, MACHINE	2
16	PAOZZ	96906	MS35338-44	WASHER, LOCK	2
17	PBOZZ	88044	AN960-416L	WASHER, FLAT	2
18	PAOZO	97403	13219E9749-1	GAGE, DIFFERENTIAL, D	1
19	PAOZZ	96906	MS51967-20	NUT, PLAIN, HEXAGON	2
20	PAOZZ	96906	MS27183-21	WASHER, FLAT	2
21	PAOZZ	96906	MS35751-158	BOLT, SQUARE NECK	2
22	PBOZZ	97403	13217E6313	COUPLING, CLAMP, PIPE	2
23	PAOZZ	97403	13217E6318	PACKING, PREFORMED	1
24	PBOZZ	97403	13217E6312	COVER, ACCESS	1
25	PBOZO	97403	13216E2798	VALAVE, SAFETY RELIEF	1
26	PAOZZ	96906	MS29513-010	PACKING, PREFORMED	1
27	PAOZZ	96906	MS35425-36	NUT, PLAIN, WING	1
28	PAOZZ	96906	MS35338-144	WASHER, LOCK	1
29	PBOZZ	97403	13217E6317	RETAINER, CANISTER	1
30	PBOZZ	97403	13216E2789-4	CLAMP, BAND	1
31	PBOZZ	97403	13217E6316	FILTER ELEMENT, FLUI	4
32	PAOZO	81349	MILF52308	FILTER ELEMENT, FLUI	4
33	PBOZZ	97403	13217E6315	ROD, THREAD END	1
34	PAOZZ	96906	MS51969-5	NUT, PLAIN, HEXAGON	1
35	XCOZZ	97403	13216E2767	PLATE, INSTRUCTION (INLET)	1
36	XCOZZ	97403	13216E2766	PLATE, DATA (OUTLET)	1
37	XCOZZ	97403	13216E2768	PLATE, INSTRUCTION (DRAIN)	1
38	XDOZZ	97403	13219E9751	DECAL (FILTER ELEMENT CHANGE)	1
39	XDOZZ	97403	13217E5358	PLATE, INSTRUCTION (MAX WORKING PRESSURE 75 PSI)	1
40	XCOZZ	97403	13217E6308	PLATE, INDENIFICATIO (SPECIFICATION)	1
41	XCFZZ	97403	13217E6311	TANK, FILTER SEPARAT	1

SECTION II				TM5-4930-230-23P	
(1)	(2)	(3)	(4)	(5)	(6)
ITEM NO	SMR CODE	CAGEC	PART NUMBER	DESCRIPTION AND USABLE ON CODES (UOC)	QTY
42	PAOZZ	96906	MS51967-15	NUT, PLAIN, HEXAGON	6
43	XDOZZ	96906	MS35338-48	WASHER, LOCK	6
44	PAOZO	96906	MS27183-18	WASHER, FLAT	6
45	PAOZZ	96906	MS90728-113	SCREW, CAP, HEXAGON H	6

END OF FIGURE



4788-009

Figure 7. Liquid Distributor Manifold.

SECTION II					
(1)	(2)	(3)	(4)	(5)	(6)
ITEM NO	SMR CODE	CAGEC	PART NUMBER	DESCRIPTION AND USABLE ON CODES (UOC)	QTY
				TM5-4930-230-23P	
				GROUP 01 PUMP UNIT	
				FIG. 7 LIQUID DISTRIBUTOR MANIFOLD	
1	PBOZZ	97403	13217E7124	MANIFOLD, FUELING	1
2	PAOZO	96906	MS27029-11	PLUG, QUICK DISCONNE	1
3	PAOZZ	96906	MS51967-9	NUT, PLAIN, HEXAGON	4
4	XDOZZ	96906	MS35338-45	WASHER, LOCK	4
5	PAOZO	96906	MS27183-14	WASHER, FLAT	4
6	PBOZA	97403	13217E7123	BOLT, U	2
7	PAOZZ	96906	MS27030-6	GASKET	3
				END OF FIGURE	

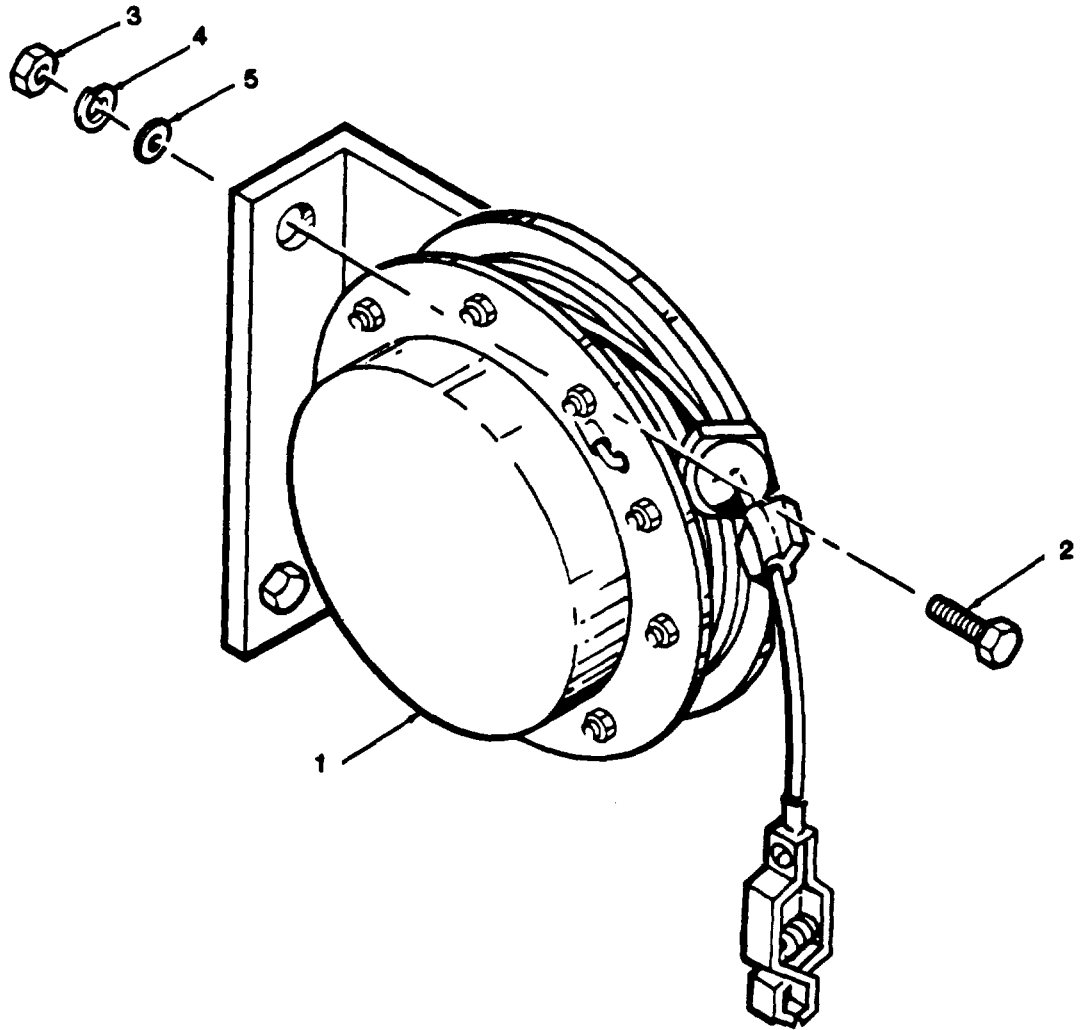


Figure 8. Static Discharge Reel

SECTION II		TM5-4930-230-23P				
(1)	(2)	(3)	(4)	(5)	(6)	
ITEM NO	SMR CODE	CAGEC	PART NUMBER	DESCRIPTION AND USABLE ON CODES (UOC)	QTY	
				GROUP 01 PUMP		
				FIG. 8 STATIC DISCHARGE REEL		
1	PAOZZ	81349	MIL-R-83232/2	REEL, STATIC	1	
2	XDOZZ	96906	MS90725-64	SCREW, CAP, HEXAGON H	2	
3	PAOZZ	96906	MS51967-9	NUT, PLAIN, HEXAGON	2	
4	PAOZZ	96906	MS35333-42	WASHER, LOCK	2	
5	PAOZO	96906	MS27183-14	WASHER, FLAT	2	
				END OF FIGURE		

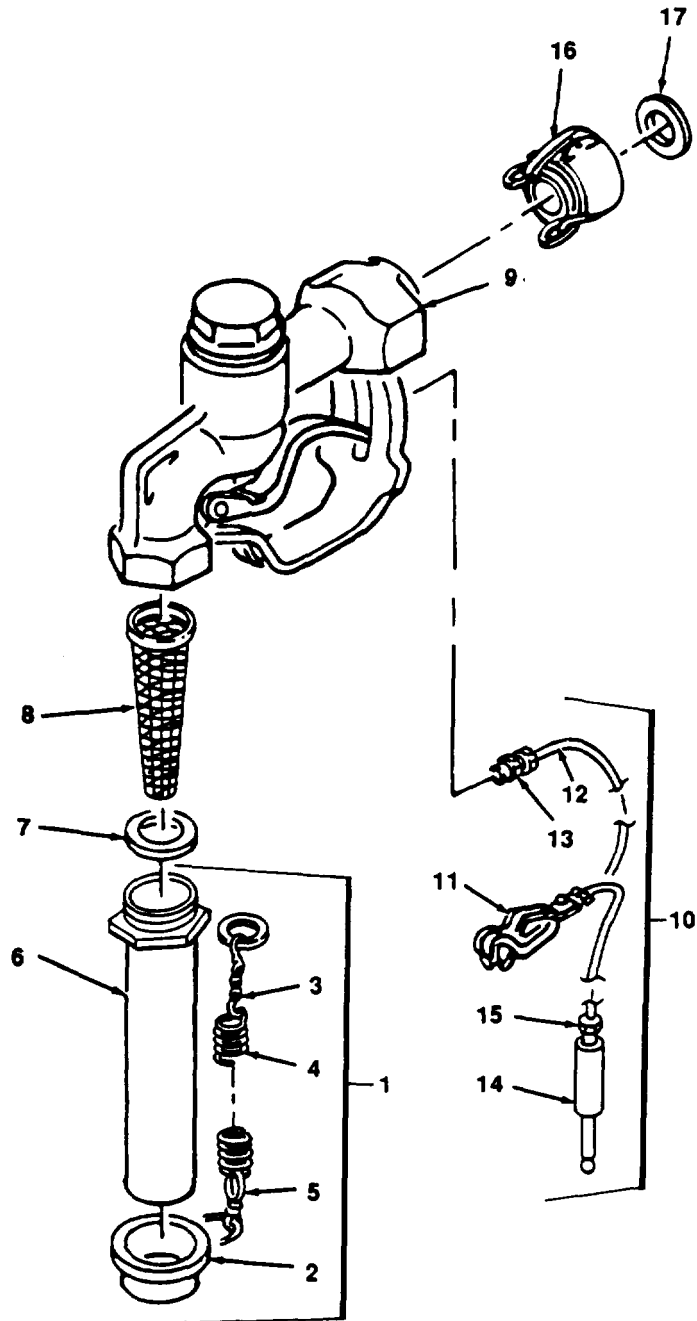


Figure 9. Nozzle Assembly, Fuel Dispensing.

SECTION II		TM5-4930-230-23P			
(1)	(2)	(3)	(4)	(5)	(6)
ITEM	SMR		PART		
NO	CODE	CAGEC	NUMBER	DESCRIPTION AND USABLE ON CODES (UOC)	QTY
GROUP 01 PUMP UNIT					
FIG. 9 NOZZLE ASSEMBLY, FUEL DISPENSING					
	PAOFZ	97403	13217E2974	NOZZLE, FUEL AND OIL	2
1	PAOZZ	81718	296CA1 5/8	CAP, ASSEMBLY, DUST	1
2	XDOZZ	81718	H-3804-AG	CAP	1
3	PAOZZ	81718	H3673M	HOOK, CHAIN, S	2
4	XDOZZ	81718	H-9209-M	SPRING, COMPRESSION	1
5	PBOZZ	81718	H284M-12	CHAIN, NOZZLE	1
6	PAFZZ	81718	190GT-1 1/2	SPOUT ASSEMBLY	1
7	PBFZZ	81718	H7670M	PACKING, PREFORMED	1
8	PAFZZ	81718	153-11/2X15/8	STRAINER ELEMENT, SE	1
9	XDFZZ	81714	D546A	BODY, NOZZLE	1
10	PBOZO	81718	616W	DISCHARGER, ELECTROS	1
11	XDOZZ	81718	H5482M	CLIP, ELECTRICAL	1
12	XAOZZ	81718	45132RS	WIRE	1
13	PAOZZ	96906	MS25384-3	CONTACT, ELECTRICAL	1
14	PAOZZ	96906	MS3493-1	PLUG, TIP	1
15	PAOZZ	96906	MS3493-5	PLUG, TIP	2
16	PBOZZ	96906	MS27026-9	COUPLING HALF, QUICK	2
17	PAOZZ	96906	MS27030-5	GASKET	1

END OF FIGURE

7
8 THRU 17

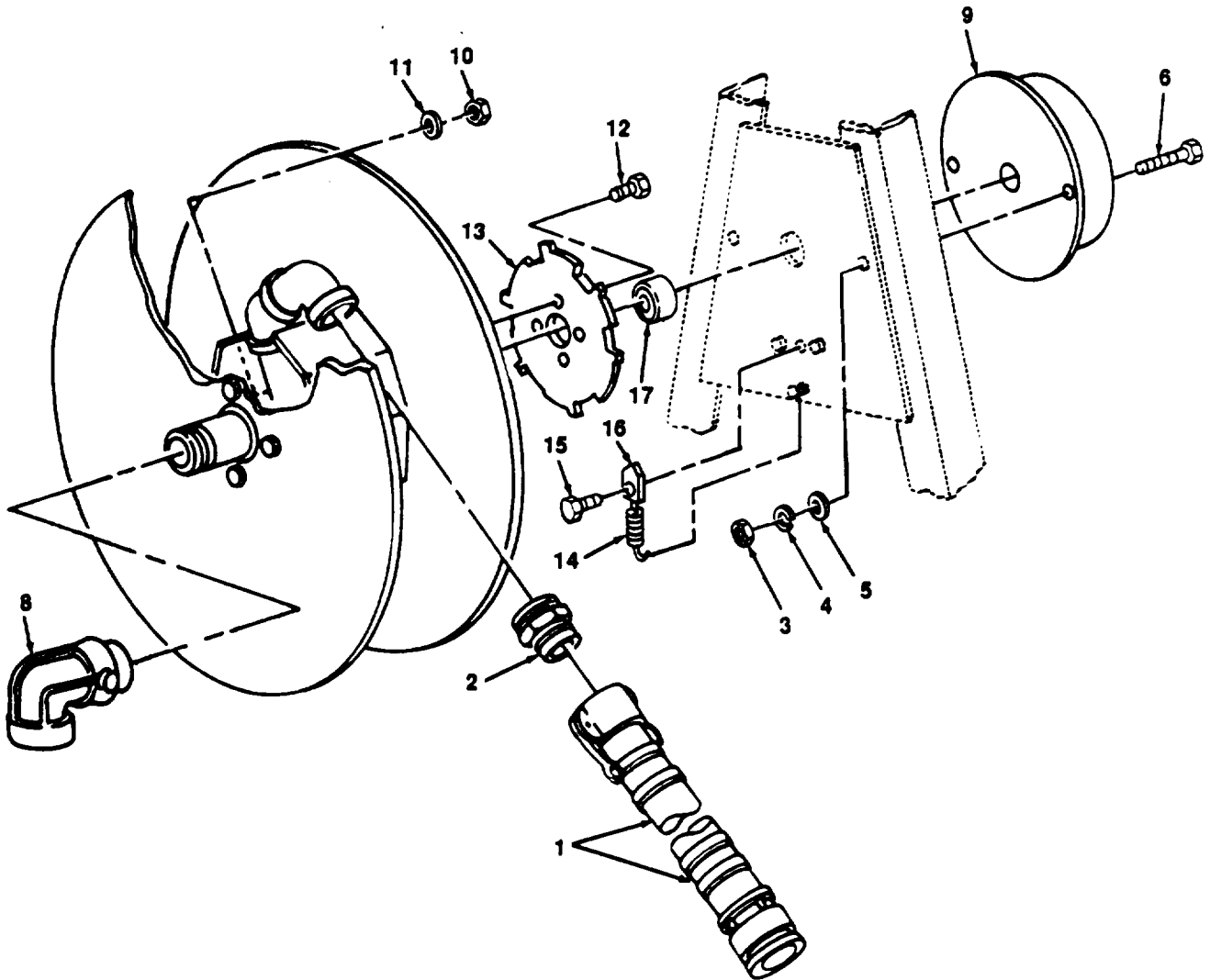


Figure 10. Reel Assembly, Fuel Dispensing.

SECTION II (1)	SMR (2)	(3)	TM5-4930-230-23P (4)	(5)	(6)
ITEM NO	CODE	CAGEC	PART NUMBER	DESCRIPTION AND USABLE ON CODES (UOC)	QTY
GROUP 01 PUMP UNIT					
FIG. 10 REEL ASSEMBLY, FUEL DISPENSING					
1	PBOZZ	81349	M370A05B2A4800	HOSE ASSEMBLY, NONME 1.50 IN. X 40.0 FT	2
2	PAOZZ	96906	MS27022-9	COUPLING HALF, QUICK	2
3	PAFZZ	96906	MS51967-9	NUT, PLAIN, HEXAGON	2
4	PAFZZ	96906	MS35338-46	WASHER, LOCK	2
5	PAFZO	96906	MS27183-14	WASHER, FLAT	2
6	XDFZZ	96906	MS90725-64	SCREW, CAP, HEXAGON H	2
7	PBFZZ	97403	13217E7117	REEL ASSEMBLY, HOSE COMPONENTS SAME AS REEL ASSEMBLY P/N 13217E7116, FSCM 97403, EXCEPT WHERE INDIVIDUAL COMPONENTS ARE NOTED	1
7	PBFFF	97403	13217E7116	REEL ASSEMBLY, RIGHT	1
8	PBOZZ	09310	980-1-1-2	SWING JOINT, PIPE	1
9	PBFZZ	82366	61210-1	SPRING ASSY, POC, RH USED WITH REEL P/N 13217E7117 ONLY	1
9	PBFZZ	82366	61210-2	SPRING, POCASSY, LH USED WITH REEL P/N 13217E7116 ONLY	1
10	PAFZZ	96906	MS51967-5	NUT, PLAIN, HEXAGON	4
11	XDFZZ	96906	MS35338-45	WASHER, LOCK	4
12	PAFZZ	96906	MS16997-81	SCREW, CAP, SOCKET HE	4
13	PBFZZ	82366	43292	RATCHET ASSY	1
14	PAFZZ	82366	43281	SPRING, SPECIAL	1
15	PBFZZ	80205	NAS1189-4P10	SCREW, SELF-LOCKING	1
16	XDFZZ	14555	8519A7117-4	PAWL, LH USED WITH REEL P/N 13217E7117 ONLY	1
16	XDFZZ	14555	8519A7116-4	PAWL, RH, USED WITH REEL P/N 13217E7116 ONLY	1
17	PAFZZ	82366	40005	BEARING, BALL, ANNULA	1

END OF FIGURE

SECTION II

TM 5-4930-230-23P

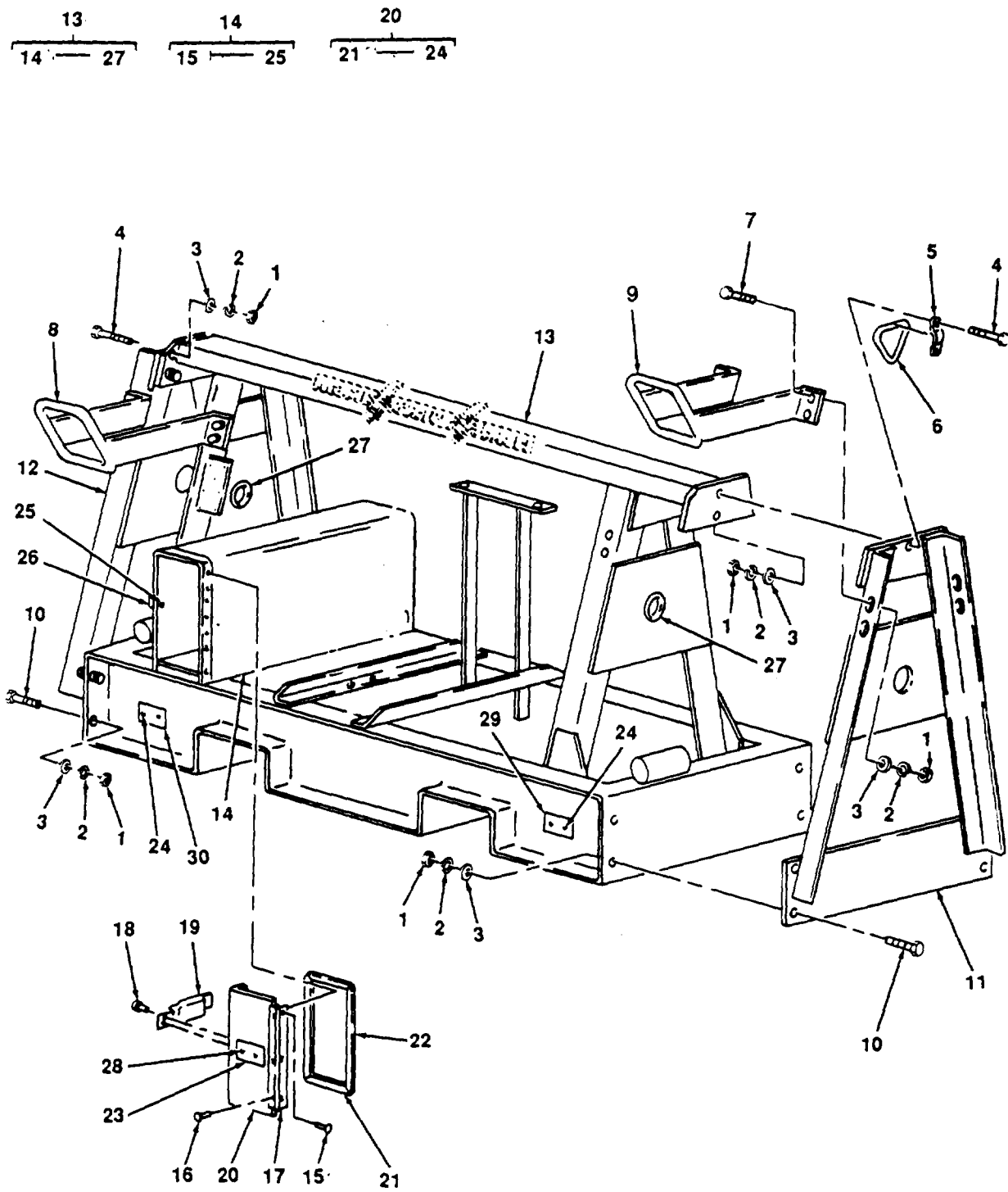


Figure 11. Frame Pump Unit.

SECTION II (1)	ITEM (2)	(3)	TM5-4930-230-23P (4)	(5)	(6)
NO	SMR CODE	CAGEC	PART NUMBER	DESCRIPTION AND USABLE ON CODES (UOC)	QTY
GROUP 01 PUMP UNIT					
FIG. 11 FRAME, PUMP UNIT					
1	PAOZZ	96906	MS51967-15	NUT, PLAIN, HEXAGON	28
2	XDOZZ	96906	MS35338-48	WASHER, LOCK	8
3	PAOZO	96906	MS27183-18	WASHER, FLAT	8
4	PAOZZ	96906	MS90728-117	SCREW, CAP, HEXAGON H	12
5	PBOZZ	97403	13217E7093	STRAP, RETAINING	2
6	PAOZZ	97403	13217E7094	LINK, CHAIN, END	2
7	PAOZO	96906	MS90728-114	SCREW, CAP, HEXAGON H	8
8	PDOZZ	97403	13217E7115-2	GUIDE HOSE LH	1
9	PBFZZ	97403	13217E7115-1	GUIDE, HOSE, RH	1
10	PBFZO	96906	MS51095-416	SCREW, CAP, HEXAGON H	8
11	XBFZZ	97403	13217E7113	A FRAME, OUTER RH	1
12	XBFZZ	97403	13217E7114	A FRAME OUTER LEFT	1
13	PBFZZ	97403	13217E7111	A FRAME ASSEMBLY	1
14	XBFZZ	97403	13217E7112	BOX, STORAGE	1
15	PAOZZ	96906	MS20600B4W6	RIVET, BLIND	7
16	PAOZZ	96906	MS20470B4-6	RIVET, SOLID	7
17	XDOZZ	96906	MS35825-2A	HINGE, BUTT	1
18	PAOZZ	96906	MS20570B4-7	RIVET, SOLID	2
19	PBOZZ	96906	MS18015-3	STRIKE, CATCH	1
20	XDOZZ	97403	13217E7112-6	DOOR	1
21	PAOZZ	97403	13217E7112-11	RUBBER STRIP 1/4 IN.X 1/8 IN.X 7.50 IN.LG	2
22	PAOZZ	97403	13217E7112-13	RUBBER STRIP 1/4 IN.X 1/8 IN.X 16.0 IN.LG	2
23	XDOZZ	97403	13217E7142	PLATE, INSTRUCTION	1
24	PAOZZ	96906	MS20600AD6W4	RIVET, BLIND	4
25	PAOZZ	96906	MS20470B4-16	RIVET, SOLID	2
26	PBOZZ	96906	MS18015-2	LATCH	1
27	PAFZZ	97403	13217E7111-21	BUSHING, SLEEVE	2
28	PAOZZ	96906	MS20600AD6W4	RIVET, BLIND	8
29	XDOZZ	97403	13217E7127	PLATE, IDENT	1
30	XDOZZ	97403	13217E7101	PLATE, IDENTIFICATIO	1

END OF FIGURE

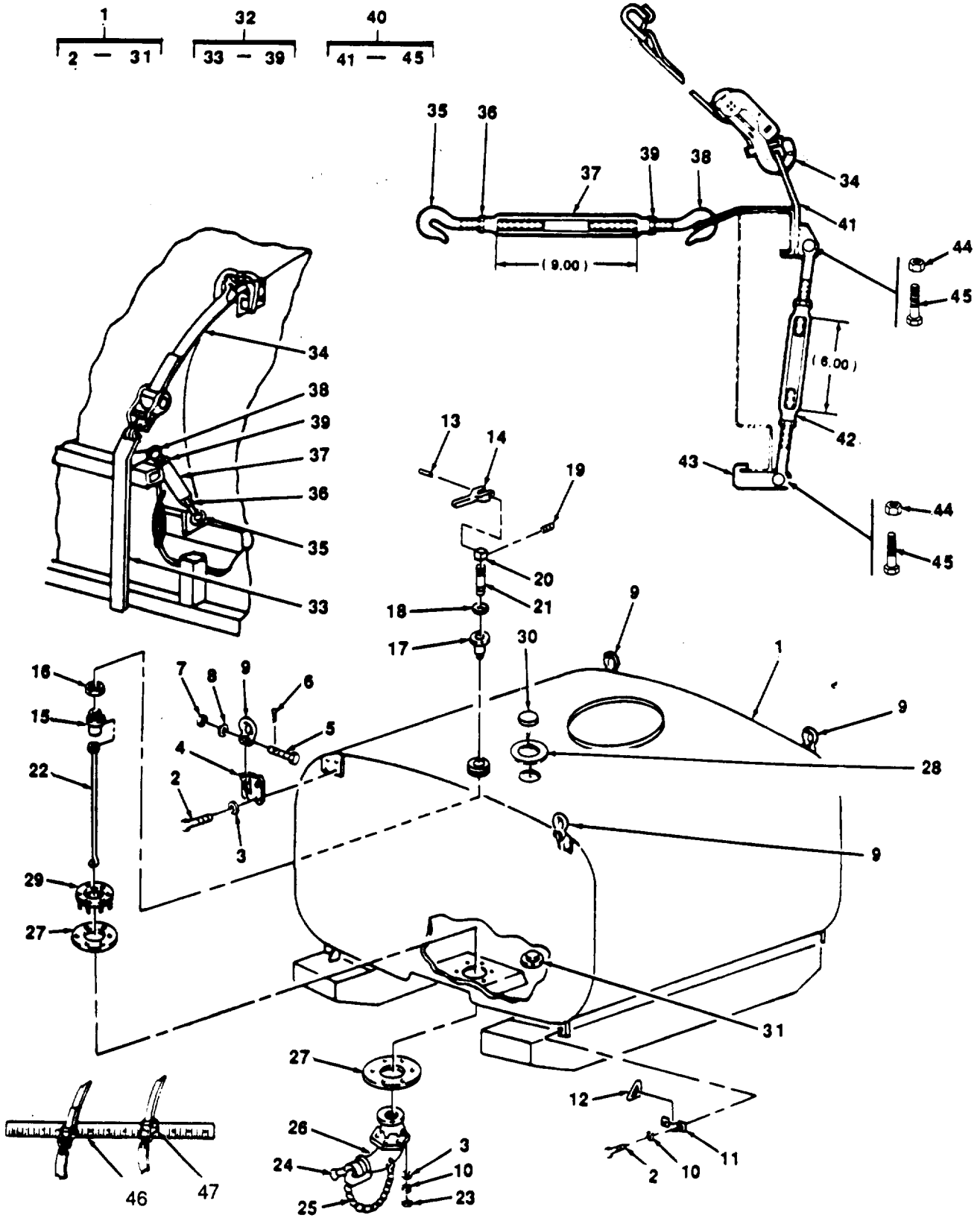


Figure 12. Tank Assembly, Tiedown Tank and Pump.

SECTION II (1) ITEM NO	(2) SMR CODE	(3) CAGEC	TM5-4930-230-23P (4) PART NUMBER	(5) DESCRIPTION AND USABLE ON CODES (UOC)	(6) QTY
GROUP 02 TANKS					
FIG. 12 TANK ASSEMBLY, TIEDOWN TANK AND PUMP					
1	XBOFH	97403	13217E7080	TANK, LIQUID STORAGE	1
2	PAOZZ	96906	MS18154-113	SCREW, CAP, HEXAGON H	24
3	PAOZZ	96906	MS27183-18	WASHER, FLAT	22
4	XCOZZ	97403	13217E7092	BRACKET, SHACKLE	4
5	PAOZZ	96906	MS51105-464	SCREW, CAP, HEXAGON H	4
6	PAOZZ	96906	MS24665-357	PIN, COTTER	4
7	PAOZZ	96906	MS35692-58	NUT, PLAIN, SLOTTED, H	4
8	PAOZZ	96906	MS27183-23	WASHER, FLAT	4
9	PBOZZ	97403	13217E7085	SHACKLE	4
10	XDOZZ	96906	MS35338-48	WASHER, LOCK	14
11	PAOZZ	97403	13217E7093	STRAP, RETAINING	4
12	PAOZZ	97403	13217E7094	LINK, CHAIN, END	4
13	PAOZZ	96906	MS16562-256	PIN, SPRING	1
14	PBOZZ	97403	13217E7091	LEVER, CAM	1
15	PBOZZ	97403	13217E7088	YOKE, ADJUSTING, VALV	1
16	PAOZZ	96906	MS35691-36	NUT, PLAIN, HEXAGON	1
17	XDOZZ	97403	13217E7086	BASE, CAM LEVER	1
18	PAOZF	96906	MS29513-112	PACKING, PREFORMED	1
19	PAOZZ	96906	MS51029-51	SETSCREW	1
20	PBOZZ	01400	113-6	ROD, DISCHARGE	1
21	PBOZZ	97403	13217E7087	ROD END, THREADED	1
22	PBOZZ	97403	13217E7089	ROD, CONNECTING, VALV	1
23	PAOZZ	96906	MS51967-14	NUT, PLAIN, HEXAGON	6
24	PAOZZ	96906	MS27028-11	CAP, QUICK DISCONNEN	2
25	PAOZZ	96906	MS87006-22	HOOK, CHAIN, S	1
26	PBOZZ	09310	380AMQ2IN	VALVE, ASSEMBLY	1
26	PAOZZ	96906	MS27028-11	CAP, QUICK DISCONNEN	2
27	PAOZZ	96906	MS87006-22	HOOK, CHAIN, S	1
27	PAOZZ	97403	13217E7084	GASKET	2
28	PBOZZ	H2313	M25988/226ES	GASKET	1
29	PAOZZ	97403	13217E7082	RETAINER, PACKING	1
30	PBOZZ	H2313	M25988/226ES	GASKET	1
30	XDOZZ	81348	PPP-P-420TY2CLC	PLUG DRUM	1
31	PAOZZ	97403	13218E0122-17	PLUG, PIPE	1
32	PAOZZ	97403	13217E7150	TIEDOWN, CARGO, VEHIC	10
33	XDOZZ	97403	13217E7152	BRACKET, TIE DOWN	1
34	XDOZZ	97403	13217E7151	STRAP, WEBBING	1
35	XDOZZ	96906	MS27953-10	BOLT, HOOK	1
36	XDOZZ	96906	MS35691-34	NUT, PLAIN, HEXAGON	1
37	XDOZZ	96906	MS27954-5	TURNBUCKLE BODY	1
38	XDOZZ	96906	MS27953-9	BOLT, HOOK	1
39	XDOZZ	96906	MS27952-7	NUT, PLAIN, HEXAGON	1
40	PAOZZ	97403	13217E7157	TIEDOWN, CARGO, VEHIC	10
41	XDOZZ	97403	13217E7158	BRACKET	1
42	XDOZZ	81348	FF-T-791TYPEICL7 FORM1SIZE.50X6IN	TURNBUCKLE	1
43	XDOZZ	97403	13217E7159	CLIP BRACKET	1

SECTION II					
(1)	(2)	(3)	(4)	(5)	(6)
ITEM	SMR		PART		
NO	CODE	CAGEC	NUMBER	DESCRIPTION AND USABLE ON CODES (UOC)	QTY
44	XDOZZ	96906	MS51967-8	NUT, PLAIN, HEXAGON	2
45	XDOZZ	96906	MS90725-64	SCREW, CAP, HEXAGON	2
				UOC: BXQ, DPF	
46	PAOZZ	97403	13217E7144	GAGE STICK, PETROLEU	1
47	XDOZZ	97403	13220E5288-2	STRAP, WEBBING	2

END OF FIGURE

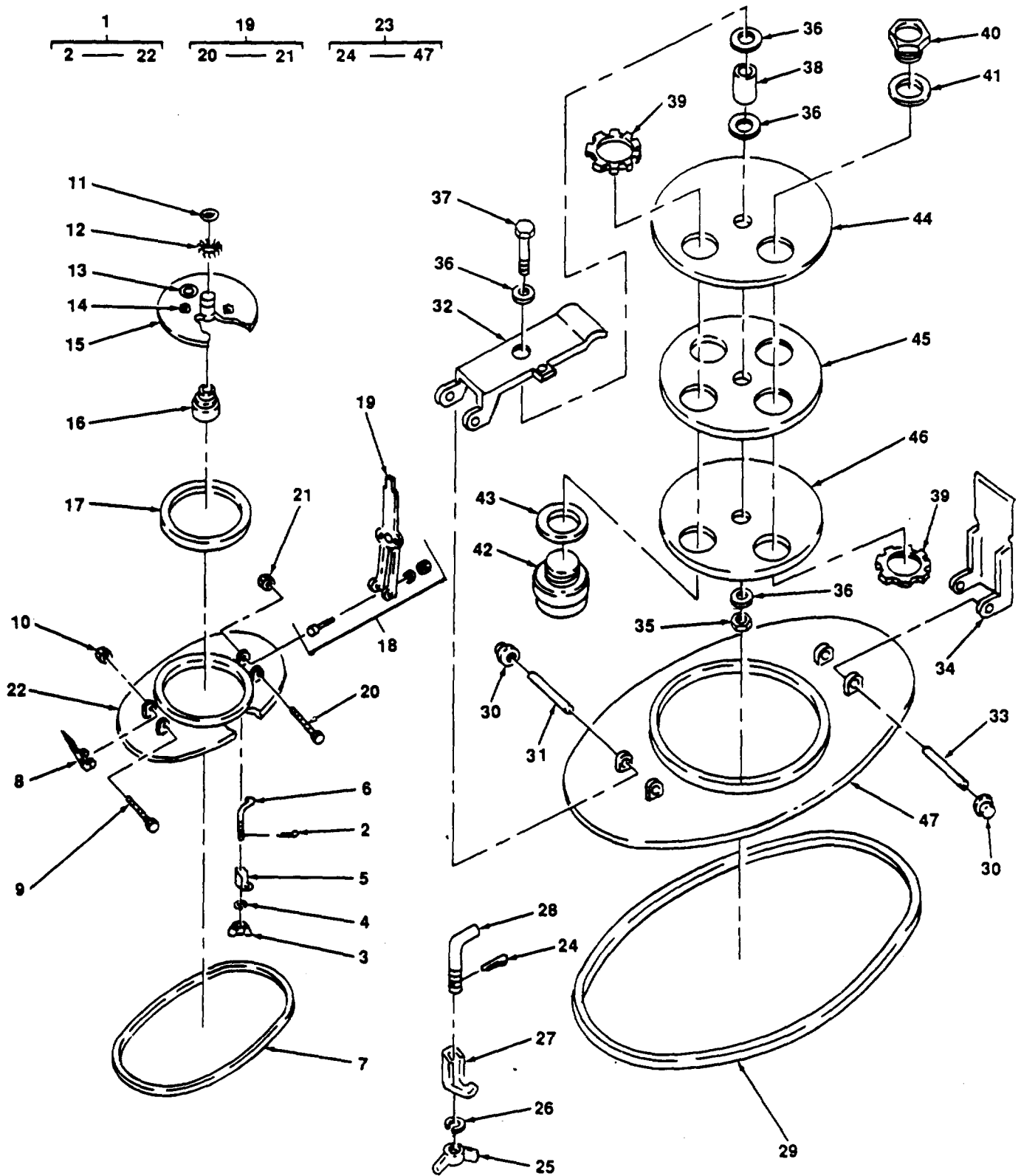


Figure 13. Manhole Cover (Models 1 and 2).

SECTION II (1) ITEM NO	(2) SMR CODE	(3) CAGEC	TM5-4930-230-23P (4) PART NUMBER	(5) DESCRIPTION AND USABLE ON CODES (UOC)	(6) QTY
GROUP 02 TANKS					
FIG. 13 MANHOLE COVER (MODELS 1 AND 2)					
1	XBOZZ	97403	13226E0922	COVER,ACCESS ASSEMBLY <MODEL 1>, FOR ASSEMBLY REPLACEMENT ORDER (12718) 887-L-541	1
2	PAOZZ	96906	MS24665-357	PIN,COTTER UOC:BXQ	6
3	PAOZZ	12718	887-23C	NUT,PLAIN,WING UOC:BXQ	6
4	XDOZZ	96906	MS35338-45	WASHER,LOCK UOC:BXQ	6
5	PBOZZ	12718	887-23B	LUG UOC,BXQ	6
6	PBOZZ	12178	887-23A	BOLT,HOOK UOC,BXQ	6
7	PAOZZ	12718	887-22	GASKET UOC:BXQ	1
8	XDOZZ	12718	1097SA-4	CAM UOC:BXQ	1
9	PAOZZ	12718	1097-8	SCREW,CAP,HEXAGON H UOC:BXQ	1
10	PAOZZ	12718	887-23C	NUT,PLAIN,WING UOC,BXQ	2
11	PBOZZ	12718	997R6	RING,RETAINING UOC:BXQ	1
12	PBOZZ	12718	887-7	WASHER,SPRING TENSI UOC:BXQ	1
13	PAOZZ	12718	FX887-11	PLUG,FUSIBLE UOC:BXQ	1
14	XDOZZ	12718	FX887-11G	GASKET:FUSE PLUG UOC:BXQ	1
15	XDOZZ	12718	FX997R-2	PLUG,FILL 8.0 IN UOC:BXQ	1
16	XDOZZ	12718	937	VENT, TRIPLEX UOC:BXQ	1
17	PAOZZ	12718	FX997-12	GASKET UOC:BXQ	1
18	PBOZZ	12718	1097-5	HINGE ASSEMBLY ADJUSTMENT UOC:BXQ	1
19	XDOZZ	12718	1097SA-3	HINGE UOC:BXQ	1
20	PAOZZ	96906	MS18154-113	SCREW,CAP,HEXAGON H UOC:BXQ	1
21	PAOZZ	96906	MS51967-14	NUT,PLAIN,HEXAGON UOC:BXQ	1
22	XDOZZ	12718	1097S1	COVER, OVAL UOC:BXQ	1
23	XDOOZ	12718	887-L-541	COVER,ACCESS ASSY ASSEMBLY <MODEL 2>	1

SECTION II		TM5-4930-230-23P				
(1)	(2)	(3)	(4)	(5)	(6)	
ITEM	SMR		PART			
NO	CODE	CAGEC	NUMBER	DESCRIPTION AND USABLE ON CODES (UOC)	QTY	
24	PAOZZ	96906	MS24665-357	PIN,COTTER	6	
25	XDOZZ	12718	887-128	NUT,WING	6	
26	XDOZZ	12718	887-130	WASHER,LOCK	6	
27	XDOZZ	12718	887-125	HOOK CLAMP		
28	XDOZZ	12718	887-123	ELL BOLT		
29	PBOZZ	12718	887-122	GASKET	1	
30	PBOZZ	12718	1820-001	NUT,PLAIN,EXTENDED	4	
31	XDOZZ	12718	887-801	HINGE PIN 3/8IN X 5IN	1	
32	XDOZZ	12718	2097-301	HINGE	1	
33	XDOZZ	12718	887-802	PIN,HINGE	1	
34	XDOZZ	12718	2097-401	CAM,LOCKING	1	
35	XDOZZ	12718	1607-180	NUT,RETAINER	1	
36	XDOZZ	12718	2097-700	WASHER,RETAINER	4	
37	XDOZZ	12718	2097-916	BOLT,RETAINER	1	
38	XDOZZ	12718	2097-501	SPACER	1	
39	XDOZZ	12718	2097-910	NUT,CONDUIT	1	
40	XDOZZ	12718	887-353	FUSE PLUG	1	
41	XDOZZ	12718	887-213	GASKET,FUSE PLUG	1	
42	XDOZZ	12718	937	VENT	1	
43	PBOZZ	12718	21-100	GASKET	1	
44	XDOZZ	12718	2097-249	PLUG 10.0 IN	1	
45	PAOZZ	12718	2097-251	GASKET	1	
46	XDOZZ	12718	2097-250	GASKET RETAINER	1	
47	XDOZZ	12718	887-140	COVER,OVAL	4	

END OF FIGURE

SECTION II (1)	SMR (2)	CAGEC (3)	TM5-4930-230-23P PART (4)	DESCRIPTION AND USABLE ON CODES (UOC) (5)	QTY (6)
ITEM NO	CODE		NUMBER		
				GROUP 03 BULK	
				FIG. BULK	
1	PBOZZ	81349	M16878/5BNL9	WIRE,ELECTRICAL	2
2	PBOZZ	81349	M16878/5BJE9	WIRE,ELECTRICAL	2
				END OF FIGURE	

BULK-1

TM 5-4930-230-23P

SECTION III. SPECIAL TOOLS LIST

(NOT APPLICABLE)

CROSS-REFERENCE INDEXES

NATIONAL STOCK NUMBER INDEX

STOCK NUMBER	FIG.	ITEM	STOCK NUMBER	FIG.	ITEM
5935-00-007-9202	9	14	5340-00-237-6254	11	19
5360-00-007-9945	10	14	5330-00-248-3835	6	26
5310-00-014-5850	3	6	4730-00-268-7479	4	5
	3	14	5305-00-269-3233	3	31
	3	28	5305-00-269-3234	2	12
5315-00-043-1787	4	33	4720-00-273-9514	6	2
5310-00-045-3299	3	19	5310-00-274-9337	6	27
5305-00-052-5925	4	28	4730-00-278-3678	6	14
5305-00-071-2069	6	45	4730-00-278-4684	6	13
5305-00-071-2070	11	7	5940-00-283-5281	3	39
5305-00-071-2073	11	4	5340-00-290-4504	4	38
5305-00-071-2088	6	6	5340-00-290-4521	4	36
	6	15	6145-00-295-2824	BULK	2
4330-00-072-6700	6	31	5315-00-298-1481	12	6
5310-00-080-6004	1	12		13	2
	2	23		13	24
	5	11	5330-00-318-8843	12	29
	7	5	5935-00-322-8959	2	17
	8	5	5306-00-324-0263	13	6
	10	5	5340-00-345-4838	13	13
5310-00-081-4219	5	6	4330-00-351-7092	6	29
5430-00-110-4019	12	20	4730-00-360-0589	10	2
5940-00-114-1305	3	46	5330-00-360-0595	1	2
	3	54		1	7
5940-00-114-1306	3	36		1	21
	3	45		1	29
5940-00-115-5004	2	16		9	17
5320-00-118-1995	11	16	4930-00-405-7544	9	6
4930-00-119-0452	9	1	4820-00-407-2581	6	25
5320-00-119-6826	11	25	5310-00-407-9566	5	5
4930-00-120-9602	9	5	5340-00-451-8058	6	24
4820-00-134-8248	6	3	5306-00-476-7559	6	33
5940-00-143-4774	3	50	3110-00-491-1494	10	17
5940-00-143-4777	5	2	6145-00-542-6677	BULK	1
5940-00-143-4780	3	42	5305-00-543-2419	5	12
	3	49	5305-00-543-2671	12	19
5305-00-161-0698	12	5	5940-00-557-1629	5	1
5320-00-165-8815	11	18	5940-00-557-4345	3	35
5310-00-167-0835	6	17		3	53
5310-00-171-2435	12	7	5935-00-567-0128	2	9
5330-00-171-4827	6	23	5935-00-572-5174	9	15
5340-00-178-7870	11	26	5310-00-576-5752	3	4
4710-00-186-3189	6	11		3	13
5310-00-193-7577	3	22		3	27
6680-00-197-4941	6	5	5320-00-582-3272	11	15
6680-00-197-4942	6	9	5320-00-582-3276	5	14
4730-00-203-1010	9	16		11	24
5306-00-225-8503	5	7		11	28
5306-00-225-9098	4	23	5310-00-582-5965	3	17
5330-00-235-4716	6	10		6	16

CROSS-REFERENCE INDEXES

NATIONAL STOCK NUMBER INDEX

STOCK NUMBER	FIG.	ITEM	STOCK NUMBER	FIG.	ITEM
5310-00-595-7237	8	4	5310-00-809-5998	11	3
5330-00-612-2414	1	9		12	3
	1	17	5310-00-809-8533	12	8
	4	2	5305-00-821-3869	2	22
	7	7	4730-00-823-5316	1	19
5305-00-637-1119	4	13	5310-00-823-8803	6	20
5310-00-637-9541	1	11	5975-00-833-7606	2	18
	2	13	4730-00-869-5246	1	22
	2	21		1	28
	3	32	5310-00-880-7744	5	4
	5	10		10	10
	10	4	5310-00-880-7746	4	10
4730-00-649-9100	4	1	5920-00-897-4857	9	10
	12	24	5310-00-897-6082	12	16
	12	26	4930-00-902-4642	9	
5310-00-692-9744	13	12	5310-00-913-5474	6	34
5365-00-712-5972	4	26	4730-00-915-5127	7	2
5310-00-712-7731	4	27	5305-00-915-8087	12	2
4730-00-721-9639	1	5		13	20
	4	4	4930-00-922-2351	13	18
5310-00-723-2737	3	8	5310-00-926-5870	6	28
5310-00-732-0558	2	20	5305-00-932-0962	13	9
	5	9	5310-00-933-8120	3	11
5310-00-732-0560	4	18	5310-00-934-9751	3	3
5330-00-732-6270	13	7	5310-00-934-9757	3	18
5310-00-732-6278	13	3	5310-00-934-9765	3	10
	13	10	4730-00-938-7997	4	3
5330-00-733-2208	12	18	4730-00-948-1719	1	23
4730-00-735-4388	1	3	5310-00-950-1310	3	23
	1	6	5305-00-958-0666	2	10
4730-00-735-4397	10	8	5305-00-964-0589	11	10
5315-00-753-3895	12	13	5310-00-974-6623	3	9
5310-00-761-0654	1	10	4730-00-980-9411	1	20
	7	3	4330-00-983-0998	6	32
	8	3	5305-00-983-6622	10	12
	10	3	5305-00-983-6730	3	21
5310-00-761-3706	6	42	2940-00-989-3260	9	8
	11	1	5305-00-989-7435	3	5
5310-00-763-8920	6	19		3	12
5365-00-763-9326	13	11		3	26
5310-00-768-0318	12	23	4820-00-991-6517	4	12
	13	21	5310-00-997-1888	3	16
5330-00-792-6213	4	15	5305-01-004-6913	10	15
5330-00-794-6947	13	17	4730-01-007-3664	6	4
5430-00-794-6949	13	5	4710-01-009-1234	6	12
4030-00-803-0272	9	3	4730-01-009-1235	6	22
5306-00-806-8512	1	13	5306-01-009-7166	6	21
	7	6	4320-01-011-5037	5	16
5310-00-809-5998	4	19	4330-01-012-3313	6	
	6	44	4730-01-013-0100	1	14

CROSS-REFERENCE INDEXES

NATIONAL STOCK NUMBER INDEX

STOCK NUMBER	FIG.	ITEM	STOCK NUMBER	FIG.	ITEM
4010-01-013-5131	11	6	6150-01-191-9732	2	3
	12	12	4030-01-198-4257	12	25
4930-01-013-7592	12	22		12	27
5307-01-013-7888	4	17	5330-01-200-2704	13	45
5330-01-015-4753	12	27	5330-01-200-2705	13	29
3990-01-015-8457	12	32	5999-01-207-8412	9	13
6685-01-015-8645	6	18	5945-01-219-6786	3	7
5340-01-015-8667	11	5	4320-01-220-2605	4	
	12	11	5935-01-225-1987	3	24
4720-01-016-1385	1	4	4930-01-232-7687	10	9
5307-01-016-4423	4	22	5360-01-232-7688	10	9
3120-01-016-5938	11	27	5330-01-275-4433	13	43
5340-01-016-7799	6	30	4320-01-278-5276	4	25
4930-01-017-3637	12	15	4320-01-283-4525	4	7
5330-01-019-8913	3	2	4930-01-284-4005	4	29
4720-01-021-2006	1	16	5915-01-290-1912	3	15
6150-01-022-6004	2	8	5310-01-334-7388	13	30
4720-01-022-6016	1	15			
4720-01-028-1816	10	1			
4720-01-028-1818	1	1			
4730-01-029-0172	12	31			
6680-01-030-4391	6	8			
9320-01-030-6037	11	22			
5340-01-030-6854	4	39			
9320-01-031-2959	11	21			
4730-01-035-8354	6	1			
5340-01-037-8739	12	21			
4930-01-041-6870	12	4			
4320-01-047-1927	2				
5340-01-059-0114	3	30			
4720-01-071-2871	1	8			
5210-01-083-2926	12	46			
5310-01-091-1248	6	7			
5330-01-103-0958	9	7			
4930-01-127-2219	10	7			
4730-01-133-5794	7	1			
4930-01-136-2089	10	7			
6105-01-139-3183	5	3			
4820-01-150-2927	12	26			
4730-01-150-3108	4	6			
4930-01-159-4437	1	18			
4030-01-161-3989	12	9			
3990-01-169-5286	12	40			
4930-01-169-5287	1	24			
4930-01-176-6945	11	8			
4930-01-179-3719	11	9			
4730-01-180-7711	1	27			
5120-01-180-7995	10	13			
4930-01-188-3241	1	26			
3950-01-188-8202	11	13			

CROSS-REFERENCE INDEXES

CAGEC	PART NUMBER	PART NUMBER INDEX STOCK NUMBER	FIG.	ITEM
88044	AN960-416L	5310-00-167-0835	6	17
81714	D546A		9	9
81348	FF-T-791TYPEICL7 FORM1SIZE.50X6IN		12	42
12718	FX887-11	5340-00-345-4838	13	13
12718	FX887-11G		13	14
12718	FX997-12	5330-00-794-6947	13	17
12718	FX997R-2		13	15
15235	GASK925	5330-01-019-8913	3	2
15235	GUB0101		3	1
81718	H-3804-AG		9	2
81718	H-9209-M		9	4
81718	H284M-12	4930-00-120-9602	9	5
81718	H3673M	4030-00-803-0272	9	3
81718	H5482M		9	11
81718	H7670M	5330-01-103-0958	9	7
81349	MIL-H-13444	4720-00-273-9514	6	2
81349	MIL-R-83232/2		8	1
81349	MILF52308	4330-00-983-0998	6	32
96906	MS122121	5340-01-030-6854	4	39
96906	MS122122	5340-00-290-4521	4	36
96906	MS122125	5340-00-290-4504	4	38
96906	MS14315-22X	4730-00-268-7479	4	5
96906	MS15795-810	5310-01-091-1248	6	7
96906	MS16562-256	5315-00-753-3895	12	13
96906	MS16997-81	5305-00-983-6622	10	12
96906	MS18015-2	5340-00-178-7870	11	26
96906	MS18015-3	5340-00-237-6254	11	19
96906	MS18154-113	5305-00-915-8087	12	2
			13	20
96906	MS20470B4-16	5320-00-119-6826	11	25
96906	MS20470B4-6	5320-00-118-1995	11	16
96906	MS20570B4-7	5320-00-165-8815	11	18
96906	MS20600AD6W4	5320-00-582-3276	5	14
			11	24
			11	28
96906	MS20600B4W6	5320-00-582-3272	11	15
96906	MS20659-120	5940-00-115-5004	2	16
96906	MS20822-5-4D	4730-00-278-4684	6	13
96906	MS20822-5D	4730-00-278-3678	6	14
96906	MS24523-22		2	6
96906	MS24665-357	5315-00-298-1481	12	6
			13	2
			13	24
96906	MS25036-108	5940-00-143-4780	3	42
			3	49
96906	MS25036-109	5940-00-283-5281	3	39
96906	MS25036-116	5940-00-114-1305	3	46
			3	54
96906	MS25036-117	5940-00-114-1306	3	36
			3	45

CROSS-REFERENCE INDEXES

CAGEC	PART NUMBER	PART NUMBER INDEX STOCK NUMBER	FIG.	ITEM
96906	MS25036-118	5940-00-557-4345	3	35
			3	53
96906	MS25036-149	5940-00-557-1629	5	1
96906	MS25036-153	5940-00-143-4774	3	50
96906	MS25036-157	5940-00-143-4777	5	2
96906	MS25043-16DA		3	25
96906	MS25384-3	5999-01-207-8412	9	13
96906	MS27020-9	4730-00-948-1719	1	23
96906	MS27022-11	4730-00-938-7997	4	3
96906	MS27022-9	4730-00-360-0589	10	2
96906	MS27024-9	4730-00-980-9411	1	20
96906	MS27026-9	4730-00-203-1010	9	16
96906	MS27028-11	4730-00-649-9100	4	1
			12	24
			12	26
96906	MS27028-9	4730-00-869-5246	1	22
			1	28
96906	MS27029-11	4730-00-915-5127	7	2
96906	MS27029-9	4730-00-823-5316	1	19
96906	MS27030-5	5330-00-360-0595	1	2
			1	7
			1	21
			1	29
			9	17
96906	MS27030-6	5330-00-612-2414	1	9
			1	17
			4	2
			7	7
96906	MS27183-12	5310-00-081-4219	5	6
96906	MS27183-14	5310-00-080-6004	1	12
			2	23
			5	11
			7	5
			8	5
			10	5
96906	MS27183-18	5310-00-809-5998	4	19
			6	44
			11	3
			12	3
96906	MS27183-21	5310-00-823-8803	6	20
96906	MS27183-23	5310-00-809-8533	12	8
96906	MS27183-4	5310-00-950-1310	3	23
96906	MS27183-42	5310-00-014-5850	3	6
			3	14
			3	28
96906	MS27952-7		12	39
96906	MS27953-10		12	35
96906	MS27953-9		12	38
96906	MS27954-5		12	37
96906	MS29513-010	5330-00-248-3835	6	26
96906	MS29513-112	5330-00-733-2208	12	18

CROSS-REFERENCE INDEXES

CAGEC	PART NUMBER	PART NUMBER INDEX STOCK NUMBER	FIG.	ITEM
96906	MS29513-253		4	30
96906	MS29513-273		4	21
96906	MS3106F16S4P		2	4
96906	MS3452W16S-4S	5935-01-225-1987	3	24
96906	MS3456W16S-4P		2	2
96906	MS3493-1	5935-00-007-9202	9	14
96906	MS3493-5	5935-00-572-5174	9	15
96906	MS35198-73	5305-00-052-5925	4	28
96906	MS35206-218	5305-00-983-6730	3	21
96906	MS35207-264	5305-00-989-7435	3	5
			3	12
			3	26
96906	MS35214-69	5305-00-637-1119	4	13
96906	MS35226-50	5305-00-958-0666	2	10
96906	MS35333-36	5310-00-193-7577	3	22
96906	MS35333-39	5310-00-576-5752	3	4
			3	13
			3	27
96906	MS35333-42	5310-00-595-7237	8	4
96906	MS35338-138	5310-00-933-8120	3	11
96906	MS35338-140	5310-00-974-6623	3	9
96906	MS35338-144	5310-00-926-5870	6	28
96906	MS35338-42	5310-00-045-3299	3	19
96906	MS35338-44	5310-00-582-5965	3	17
			6	16
96906	MS35338-45	5310-00-407-9566	5	5
			7	4
			10	11
			13	4
96906	MS35338-46	5310-00-637-9541	1	11
			2	13
			2	21
			3	32
			5	10
			10	4
96906	MS35338-48		6	43
			11	2
			12	10
96906	MS35425-36	5310-00-274-9337	6	27
96906	MS35649-2252	5310-00-997-1888	3	16
96906	MS35649-282	5310-00-934-9757	3	18
96906	MS35650-302	5310-00-934-9751	3	3
96906	MS35650-304	5310-00-934-9765	3	10
96906	MS35690-524	5310-00-723-2737	3	8
96906	MS35691-34		12	36
96906	MS35691-36	5310-00-897-6082	12	16
96906	MS35692-58	5310-00-171-2435	12	7
96906	MS35751-158	5306-01-009-7166	6	21
96906	MS35756-34	5315-00-043-1787	4	33
96906	MS35825-2A		11	17
96906	MS51029-51	5305-00-543-2671	12	19

CROSS-REFERENCE INDEXES

CAGEC	PART NUMBER	PART NUMBER INDEX STOCK NUMBER	FIG.	ITEM
96906	MS51095-416	5305-00-964-0589	11	10
96906	MS51105-464	5305-00-161-0698	12	5
96906	MS51864-103-18	5307-01-013-7888	4	17
96906	MS51864-106-20	5307-01-016-4423	4	22
96906	MS51957-85	5305-00-071-2088	6	6
			6	15
96906	MS51967-14	5310-00-768-0318	12	23
			13	21
96906	MS51967-15	5310-00-761-3706	6	42
			11	1
96906	MS51967-20	5310-00-763-8920	6	19
96906	MS51967-5	5310-00-880-7744	5	4
			10	10
96906	MS51967-8	5310-00-732-0558	2	20
			5	9
			12	44
96906	MS51967-9	5310-00-761-0654	1	10
			7	3
			8	3
			10	3
96906	MS51968-14	5310-00-732-0560	4	18
96906	MS51968-5	5310-00-880-7746	4	10
96906	MS51969-5	5310-00-913-5474	6	34
96906	MS52131-1		3	29
96906	MS87006-22	4030-01-198-4257	12	25
			12	27
96906	MS90725-39	5306-00-225-8503	5	7
96906	MS90725-64		8	2
			10	6
			12	45
96906	MS90726-43	5306-00-225-9098	4	23
96906	MS90727-57	5305-00-269-3233	3	31
96906	MS90727-58	5305-00-269-3234	2	12
96906	MS90728-113	5305-00-071-2069	6	45
96906	MS90728-114	5305-00-071-2070	11	7
96906	MS90728-117	5305-00-071-2073	11	4
96906	MS90728-61	5305-00-543-2419	5	12
96906	MS90728-65	5305-00-821-3869	2	22
81349	M16878/5BJE9	6145-00-295-2824	BULK	2
81349	M16878/5BNL9		BULK	1
H2313	M25988/226ES		12	28
			12	30
81349	M286755B03		3	55
81349	M370A05B2A0290	4720-01-028-1818	1	1
81349	M370A05B2A390	4720-01-016-1385	1	4
81349	M370A05B2A4800	4720-01-028-1816	10	1
81349	M370B06B2A0260	4720-01-021-2006	1	16
81349	M370B06B2A0890	4720-01-022-6016	1	15
81349	M370B06B2A104	4720-01-071-2871	1	8
80205	NAS1189-4P10	5305-01-004-6913	10	15
81348	PPP-P-420TY2CLC		12	30

CROSS-REFERENCE INDEXES

CAGEC	PART NUMBER	PART NUMBER INDEX STOCK NUMBER	FIG.	ITEM
81349	TYPE EE-16		3	38
			3	41
			3	48
81349	TYPE EE-8		3	34
			3	44
			3	52
15235	UNY105SA	5975-00-833-7606	2	18
81348	WW-P-471 AACBCC		4	8
81348	WW-P-471 BDBCDC		4	9
81348	WWC440TYPEE5-8	4730-01-035-8354	6	1
12718	1097-5	4930-00-922-2351	13	18
12718	1097-8	5305-00-932-0962	13	9
12718	1097SA-3		13	19
12718	1097SA-4		13	8
12718	1097S1		13	22
01400	113-6	5430-00-110-4019	12	20
19207	11675004	5340-01-059-0114	3	30
19207	11677570	5935-00-322-8959	2	17
19207	11682336-1	6150-01-022-6004	2	8
19207	11682337-1		2	15
19207	11682338	5935-00-567-0128	2	9
19207	11682339		2	14
19207	11682344		2	11
97403	13200E8802		4	24
97403	13200E8803		4	35
97403	13200E8803-1		4	40
97403	13200E8804		4	32
97403	13200E8806		4	31
97403	13200E8807-1	5365-00-712-5972	4	26
97403	13200E8807-2	5310-00-712-7731	4	27
97403	13200E8809		4	20
97403	13200E8810	4820-00-991-6517	4	12
97403	13200E8811		4	16
97403	13200E8812		4	14
97403	13200E8813	5330-00-792-6213	4	15
97403	13200E8814		4	11
97403	13200E8861		4	34
97403	13216E2766		6	36
97403	13216E2767		6	35
97403	13216E2768		6	37
97403	13216E2789-4	5340-01-016-7799	6	30
97403	13216E2798	4820-00-407-2581	6	25
97403	13217E2964	6150-01-191-9732	2	3
97403	13217E2964-1		2	7
97403	13217E2964-4		2	5
97403	13217E2974	4930-00-902-4642	9	
97403	13217E2983	4730-01-180-7711	1	27
97403	13217E2985	4930-01-188-3241	1	26
97403	13217E2987		1	25
97403	13217E5358		6	39
97403	13217E5360	6680-00-197-4941	6	5

CROSS-REFERENCE INDEXES

CAGEC	PART NUMBER	PART NUMBER INDEX STOCK NUMBER	FIG.	ITEM
97403	13217E5361	6680-01-030-4391	6	8
97403	13217E5362	6680-00-197-4942	6	9
97403	13217E5363	5330-00-235-4716	6	10
97403	13217E5365-1	4710-00-186-3189	6	11
97403	13217E5365-7	4710-01-009-1234	6	12
97403	13217E6306	4730-00-721-9639	1	5
			4	4
97403	13217E6308		6	40
97403	13217E6309	4820-00-134-8248	6	3
97403	13217E6311		6	41
97403	13217E6312	5340-00-451-8058	6	24
97403	13217E6313	4730-01-009-1235	6	22
97403	13217E6315	5306-00-476-7559	6	33
97403	13217E6316	4330-00-072-6700	6	31
97403	13217E6317	4330-00-351-7092	6	29
97403	13217E6318	5330-00-171-4827	6	23
97403	13217E7080		12	1
97403	13217E7082	5330-00-318-8843	12	29
97403	13217E7084	5330-01-015-4753	12	27
97403	13217E7085	4030-01-161-3989	12	9
97403	13217E7086		12	17
97403	13217E7087	5340-01-037-8739	12	21
97403	13217E7088	4930-01-017-3637	12	15
97403	13217E7089	4930-01-013-7592	12	22
97403	13217E7091	4930-01-041-6870	12	14
97403	13217E7092		12	4
97403	13217E7093	5340-01-015-8667	11	5
			12	11
97403	13217E7094	4010-01-013-5131	11	6
			12	12
97403	13217E7101		11	30
97403	13217E7105		1	
97403	13217E7111	3950-01-188-8202	11	13
97403	13217E7111-21	3120-01-016-5938	11	27
97403	13217E7112		11	14
97403	13217E7112-11	9320-01-031-2959	11	21
97403	13217E7112-13	9320-01-030-6037	11	22
97403	13217E7112-6		11	20
97403	13217E7113		11	11
97403	13217E7114		11	12
97403	13217E7115-1	4930-01-179-3719	11	9
97403	13217E7115-2	4930-01-176-6945	11	8
97403	13217E7116	4930-01-136-2089	10	7
97403	13217E7117	4930-01-127-2219	10	7
97403	13217E7121	4320-01-011-5037	5	16
97403	13217E7122	4730-01-013-0100	1	14
97403	13217E7123	5306-00-806-8512	1	13
			7	6
97403	13217E7124	4730-01-133-5794	7	1
97403	13217E7125	4730-00-735-4388	1	3
			1	6

CROSS-REFERENCE INDEXES

CAGEC	PART NUMBER	PART NUMBER INDEX STOCK NUMBER	FIG.	ITEM
97403	13217E7127		11	29
97403	13217E7129	4730-01-150-3108	4	6
97403	13217E7131	6105-01-139-3183	5	3
97403	13217E7132		3	56
97403	13217E7135	4320-01-047-1927	2	
97403	13217E7136		5	13
97403	13217E7137		5	15
97403	13217E7140	4330-01-012-3313	6	
97403	13217E7141-1		3	37
97403	13217E7141-2		3	40
97403	13217E7141-3		3	33
97403	13217E7141-4		3	51
97403	13217E7141-5		3	43
97403	13217E7141-6		3	47
97403	13217E7142		11	23
97403	13217E7144	5210-01-083-2926	12	46
97403	13217E7150	3990-01-015-8457	12	32
97403	13217E7151		12	34
97403	13217E7152		12	33
97403	13217E7154	5945-01-219-6786	3	7
97403	13217E7157	3990-01-169-5286	12	40
97403	13217E7158		12	41
97403	13217E7159		12	43
97403	13217E7166		2	19
97403	13217E7167	4320-01-278-5276	4	25
97403	13217E7168	4930-01-284-4005	4	29
97403	13217E7170	4320-01-283-4525	4	7
97403	13217E7174	5915-01-290-1912	3	15
97403	13218E0114-15	4730-01-007-3664	6	4
97403	13218E0122-17	4730-01-029-0172	12	31
97403	13219E9749-1	6685-01-015-8645	6	18
97403	13219E9751		6	38
97403	13220E5288-2		12	47
97403	13220E9406-3	4930-01-159-4437	1	18
97403	13220E9914-3	4930-01-169-5287	1	24
97403	13222E9858		5	8
97403	13222E9859		2	1
97403	13226E0922		13	1
97403	13227E6652		2	24
97403	13227E9783		3	20
97403	13229E5271		4	37
81718	153-11/2X15/8	2940-00-989-3260	9	8
12718	1607-180		13	35
12718	1820-001	5310-01-334-7388	13	30
81718	190GT-1 1/2	4930-00-405-7544	9	6
12718	2097-249		13	44
12718	2097-250		13	46
12718	2097-251	5330-01-200-2704	13	45
12718	2097-301		13	32
12718	2097-401		13	34
12718	2097-501		13	38

CROSS-REFERENCE INDEXES

CAGEC	PART NUMBER	PART NUMBER INDEX STOCK NUMBER	FIG.	ITEM
12718	2097-700		13	36
12718	2097-910		13	39
12718	2097-916		13	37
12718	21-100	5330-01-275-4433	13	43
81718	296CA1 5/8	4930-00-119-0452	9	1
09310	380AMQ2IN	4820-01-150-2927	12	26
82366	40005	3110-00-491-1494	10	17
82366	43281	5360-00-007-9945	10	14
82366	43292	5120-01-180-7995	10	13
81718	45132RS		9	12
82366	61210-1	4930-01-232-7687	10	9
82366	61210-2	5360-01-232-7688	10	9
81718	616W	5920-00-897-4857	9	10
05748	78678SA		4	
14555	8519A7116-4		10	16
14555	8519A7117-4		10	16
12718	887-L-541		13	23
12718	887-122	5330-01-200-2705	13	29
12718	887-123		13	28
12718	887-125		13	27
12718	887-128		13	25
12718	887-130		13	26
12718	887-140		13	47
12718	887-213		13	41
12718	887-22	5330-00-732-6270	13	7
12718	887-23A	5306-00-324-0263	13	6
12718	887-23B	5430-00-794-6949	13	5
12718	887-23C	5310-00-732-6278	13	3
			13	10
12718	887-353		13	40
12718	887-7	5310-00-692-9744	13	12
12718	887-801		13	31
12718	887-802		13	33
12718	937		13	16
			13	42
09310	980-1-1-2	4730-00-735-4397	10	8
12718	997R6	5365-00-763-9326	13	11

CROSS-REFERENCE INDEXES

FIG.	ITEM	FIGURE AND ITEM NUMBER INDEX STOCK NUMBER	CAGEC	PART NUMBER
BULK	1		81349	M16878/5BNL9
BULK	2	6145-00-295-2824	81349	M16878/5BJE9
1			97403	13217E7105
1	1	4720-01-028-1818	81349	M370A05B2A0290
1	2	5330-00-360-0595	96906	MS27030-5
1	3	4730-00-735-4388	97403	13217E7125
1	4	4720-01-016-1385	81349	M370A05B2A390
1	5	4730-00-721-9639	97403	13217E6306
1	6	4730-00-735-4388	97403	13217E7125
1	7	5330-00-360-0595	96906	MS27030-5
1	8	4720-01-071-2871	81349	M370B06B2A104
1	9	5330-00-612-2414	96906	MS27030-6
1	10	5310-00-761-0654	96906	MS51967-9
1	11	5310-00-637-9541	96906	MS35338-46
1	12	5310-00-080-6004	96906	MS27183-14
1	13	5306-00-806-8512	97403	1321E7123
1	14	4730-01-013-0100	97403	13217E7122
1	15	4720-01-022-6016	81349	M370B06B2A0890
1	16	4720-01-021-2006	81349	M370B06B2A0260
1	17	5330-00-612-2414	9696	MS27030-6
1	18	4930-01-159-4437	97403	13220E9406-3
1	19	4730-00-823-5316	96906	MS27029-9
1	20	4730-00-980-9411	9696	MS27024-9
1	21	5330-00-360-0595	96906	MS27030-5
1	22	4730-00-869-5246	96906	MS27028-9
1	23	4730-00-948-1719	96906	MS27020-9
1	24	4930-01-169-5287	97403	13220E9914-3
1	25		97403	13217E2987
1	26	4930-01-188-3241	97403	13217E2985
1	27	4730-01-180-7711	97403	13217E2983
1	28	4730-00-869-5246	96906	MS27028-9
1	29	5330-00-360-0595	96906	MS27030-5
2		4320-01-047-1927	97403	13217E7135
2	1		97403	13222E9859
2	2		96906	MS3456W16S-4P
2	3	6150-01-191-9732	97403	13217E2964
2	4		96906	MS3106F16S4P
2	5		97403	13217E2964-4
2	6		96906	MS24523-22
2	7		97403	13217E2964-1
2	8	6150-01-022-6004	19207	11682336-1
2	9	5935-00-567-0128	19207	11682338
2	10	5305-00-958-0666	96906	MS35226-50
2	11		19207	11682344
2	12	5305-00-269-3234	96906	MS90727-58
2	13	5310-00-637-9541	96906	MS35338-46
2	14		19207	11682339
2	15		19207	11682337-1
2	16	5940-00-115-5004	96906	MS20659-120
2	17	5935-00-322-8959	19207	11677570
2	18	5975-00-833-7606	15235	UNY105SA

CROSS-REFERENCE INDEXES

FIG.	ITEM	FIGURE AND ITEM NUMBER INDEX		PART NUMBER
		STOCK NUMBER	CAGEC	
2	19		97403	13217E7166
2	20	5310-00-732-0558	96906	MS51967-8
2	21	5310-00-637-9541	96906	MS35338-46
2	22	5305-00-821-3869	96906	MS90728-65
2	23	5310-00-080-6004	96906	MS27183-14
2	24		97403	13227E6652
3	1		15235	GUB0101
3	2	5330-01-019-8913	15235	GASK925
3	3	5310-00-934-9751	96906	MS35650-302
3	4	5310-00-576-5752	96906	MS35333-39
3	5	5305-00-989-7435	96906	MS35207-264
3	6	5310-00-014-5850	96906	MS27183-42
3	7	5945-01-219-6786	97403	13217E7154
3	8	5310-00-723-2737	96906	MS35690-524
3	9	5310-00-974-6623	96906	MS35338-140
3	10	5310-00-934-9765	96906	MS35650-304
3	11	5310-00-933-8120	96906	MS35338-138
3	12	5305-00-989-7435	96906	MS35207-264
3	13	5310-00-576-5752	96906	MS35333-39
3	14	5310-00-014-5850	96906	MS27183-42
3	15	5915-01-290-1912	97403	13217E7174
3	16	5310-00-997-1888	96906	MS35649-2252
3	17	5310-00-582-5965	96906	MS35338-44
3	18	5310-00-934-9757	96906	MS35649-282
3	19	5310-00-045-3299	96906	MS35338-42
3	20		97403	13227E9783
3	21	5305-00-983-6730	96906	MS35206-218
3	22	5310-00-193-7577	96906	MS35333-36
3	23	5310-00-950-1310	96906	MS27183-4
3	24	5935-01-225-1987	96906	MS3452W16S-4S
3	25		96906	MS25043-16DA
3	26	5305-00-989-7435	96906	MS35207-264
3	27	5310-00-576-5752	96906	MS35333-39
3	28	5310-00-014-5850	96906	MS27183-42
3	29		96906	MS52131-1
3	30	5340-01-059-0114	19207	11675004
3	31	5305-00-269-3233	96906	MS90727-57
3	32	5310-00-637-9541	96906	MS35338-46
3	33		97403	13217E7141-3
3	34		81349	TYPE EE-8
3	35	5940-00-557-4345	96906	MS25036-118
3	36	5940-00-114-1306	96906	MS25036-117
3	37		97403	13217E7141-1
3	38		81349	TYPE EE-16
3	39	5940-00-283-5281	96906	MS25036-109
3	40		97403	13217E7141-2
3	41		81349	TYPE EE-16
3	42	5940-00-143-4780	96906	MS25036-108
3	43		97403	13217E7141-5
3	44		81349	TYPE EE-8
3	45	5940-00-114-1306	96906	MS25036-117

CROSS-REFERENCE INDEXES

FIG.	ITEM	FIGURE AND ITEM NUMBER INDEX		PART NUMBER
		STOCK NUMBER	CAGEC	
3	46	5940-00-114-1305	96906	MS25036-116
3	47		97403	13217E7141-6
3	48		81349	TYPE EE-16
3	49	5940-00-143-4780	96906	MS25036-108
3	50	5940-00-143-4774	96906	MS25036-153
3	51		97403	13217E7141-4
3	52		81349	TYPE EE-8
3	53	5940-00-557-4345	96906	MS25036-118
3	54	5940-00-114-1305	96906	MS25036-116
3	55		81349	M286755B03
3	56		97403	13217E7132
4			05748	78678SA
4	1	4730-00-649-9100	96906	MS27028-11
4	2	5330-00-612-2414	96906	MS27030-6
4	3	4730-00-938-7997	96906	MS27022-11
4	4	4730-00-721-9639	97403	13217E6306
4	5	4730-00-268-7479	96906	MS14315-22X
4	6	4730-01-150-3108	97403	13217E7129
4	7	4320-01-283-4525	97403	13217E7170
4	8		81348	WW-P-471 AACBCC
4	9		81348	WW-P-471 BDBCDC
4	10	5310-00-880-7746	96906	MS51968-5
4	11		97403	13200E8814
4	12	4820-00-991-6517	97403	13200E8810
4	13	5305-00-637-1119	96906	MS35214-69
4	14		97403	13200E8812
4	15	5330-00-792-6213	97403	13200E8813
4	16		97403	13200E8811
4	17	5307-01-013-7888	96906	MS51864-103-18
4	18	5310-00-732-0560	96906	MS51968-14
4	19	5310-00-809-5998	96906	MS27183-18
4	20		97403	13200E8809
4	21		96906	MS29513-273
4	22	5307-01-016-4423	96906	MS51864-106-20
4	23	5306-00-225-9098	96906	MS90726-43
4	24		97403	13200E8802
4	25	4320-01-278-5276	97403	13217E7167
4	26	5365-00-712-5972	97403	13200E8807-1
4	27	5310-00-712-7731	97403	13200E8807-2
4	28	5305-00-052-5925	96906	MS35198-73
4	29	4930-01-284-4005	97403	13217E7168
4	30		96906	MS29513-253
4	31		97403	13200E8806
4	32		97403	13200E8804
4	33	5315-00-043-1787	96906	MS35756-34
4	34		97403	13200E8861
4	35		97403	13200E8803
4	36	5340-00-290-4521	96906	MS122122
4	37		97403	13229E5271
4	38	5340-00-290-4504	96906	MS122125
4	39	5340-01-030-6854	96906	MS122121

CROSS-REFERENCE INDEXES

FIG.	ITEM	FIGURE AND ITEM NUMBER INDEX		PART NUMBER
		STOCK NUMBER	CAGEC	
4	40		97403	13200E8803-1
5	1	5940-00-557-1629	96906	MS25036-149
5	2	5940-00-143-4777	96906	MS25036-157
5	3	6105-01-139-3183	97403	13217E7131
5	4	5310-00-880-7744	96906	MS51967-5
5	5	5310-00-407-9566	96906	MS35338-45
5	6	5310-00-081-4219	96906	MS27183-12
5	7	5306-00-225-8503	96906	MS90725-39
5	8		97403	13222E9858
5	9	5310-00-732-0558	96906	MS51967-8
5	10	5310-00-637-9541	96906	MS35338-46
5	11	5310-00-080-6004	96906	MS27183-14
5	12	5305-00-543-2419	96906	MS90728-61
5	13		97403	13217E7136
5	14	5320-00-582-3276	96906	MS20600AD6W4
5	15		97403	13217E7137
5	16	4320-01-011-5037	97403	13217E7121
6		4330-01-012-3313	97403	13217E7140
6	1	4730-01-035-8354	81348	WWC440TYPEE5-8
6	2	4720-00-273-9514	81349	MIL-H-13444
6	3	4820-00-134-8248	97403	13217E6309
6	4	4730-01-007-3664	97403	13218E0114-15
6	5	6680-00-197-4941	97403	13217E5360
6	6	5305-00-071-2088	96906	MS51957-85
6	7	5310-01-091-1248	96906	MS15795-810
6	8	6680-01-030-4391	97403	13217E5361
6	9	6680-00-197-4942	97403	13217E5362
6	10	5330-00-235-4716	97403	13217E5363
6	11	4710-00-186-3189	97403	13217E5365-1
6	12	4710-01-009-1234	97403	13217E5365-7
6	13	4730-00-278-4684	96906	MS20822-5-4-D
6	14	4730-00-278-3678	96906	MS20822-5D
6	15	5305-00-071-2088	96906	MS51957-85
6	16	5310-00-582-5965	96906	MS35338-44
6	17	5310-00-167-0835	88044	AN960-416L
6	18	6685-01-015-8645	97403	13219E9749-1
6	19	5310-00-763-8920	96906	MS51967-20
6	20	5310-00-823-8803	96906	MS27183-21
6	21	5306-01-009-7166	96906	MS35751-158
6	22	4730-01-009-1235	97403	13217E6313
6	23	5330-00-171-4827	97403	13217E6318
6	24	5340-00-451-8058	97403	13217E6312
6	25	4820-00-407-2581	97403	13216E2798
6	26	5330-00-248-3835	96906	MS29513-010
6	27	5310-00-274-9337	96906	MS35425-36
6	28	5310-00-926-5870	96906	MS35338-144
6	29	4330-00-351-7092	97403	13217E6317
6	30	5340-01-016-7799	97403	13216E2789-4
6	31	4330-00-072-6700	97403	13217E6316
6	32	4330-00-983-0998	81349	MILF52308
6	33	5306-00-476-7559	97403	13217E6315

CROSS-REFERENCE INDEXES

FIG.	ITEM	FIGURE AND ITEM NUMBER INDEX		PART NUMBER
		STOCK NUMBER	CAGEC	
6	34	5310-00-913-5474	96906	MS51969-5
6	35		97403	13216E2767
6	36		97403	13216E2766
6	37		97403	13216E2768
6	38		97403	13219E9751
6	39		97403	13217E5358
6	40		97403	13217E6308
6	41		97403	13217E6311
6	42	5310-00-761-3706	96906	MS51967-15
6	43		96906	MS35338-48
6	44	5310-00-809-5998	96906	MS27183-18
6	45	5305-00-071-2069	96906	MS90728-113
7	1	4730-01-133-5794	97403	1321E7124
7	2	4730-00-915-5127	96906	MS27029-11
7	3	5310-00-761-0654	96906	MS51967-9
7	4		96906	MS35338-45
7	5	5310-00-080-6004	96906	MS27183-14
7	6	5306-00-806-8512	97403	13217E7123
7	7	5330-00-612-2414	96906	MS27030-6
8	1		81349	MIL-R-83232/2
8	2		96906	MS90725-64
8	3	5310-00-761-0654	96906	MS51967-9
8	4	5310-00-595-7237	96906	MS35333-42
8	5	5310-00-080-6004	96906	MS27183-14
9		4930-00-902-4642	97403	13217E2974
9	1	4930-00-119-0452	81718	296CA1 5/8
9	2		81718	H-3804-AG
9	3	4030-00-803-0272	81718	H3673M
9	4		81718	H-9209-M
9	5	4930-00-120-9602	81718	H284M-12
9	6	4930-00-405-7544	81718	190GT-1 1/2
9	7	5330-01-103-0958	81718	H7670M
9	8	2940-00-989-3260	81718	153-11/2X5/8
9	9		81714	D546A
9	10	5920-00-897-4857	81718	616W
9	11		81718	H5482M
9	12		81718	45132RS
9	13	5999-01-207-8412	96906	MS25384-3
9	14	5935-00-007-9202	96906	MS3493-1
9	15	5935-00-572-5174	96906	MS3493-5
9	16	4730-00-203-1010	96906	MS27026-9
9	17	5330-00-360-0595	96906	MS27030-5
10	1	4720-01-028-1816	81349	M370A05B2A4800
10	2	4730-00-360-0589	96906	MS27022-9
10	3	5310-00-761-0654	96906	MS51967-9
10	4	5310-00-637-9541	96906	MS35338-46
10	5	5310-00-080-6004	96906	MS27183-14
10	6		96906	MS90725-64
10	7	4930-01-127-2219	97403	13217E7117
10	7	4930-01-136-2089	97403	13217E7116
10	8	4730-00-735-4397	09310	980-1-1-2

CROSS-REFERENCE INDEXES

FIG.	ITEM	FIGURE AND ITEM NUMBER INDEX		PART NUMBER
		STOCK NUMBER	CAGEC	
10	9	4930-01-232-7687	82366	61210-1
10	9	5360-01-232-7688	82366	61210-2
10	10	5310-00-880-7744	96906	MS51967-5
10	11		96906	MS35338-45
10	12	5305-00-983-6622	96906	MS16997-81
10	13	5120-01-180-7995	82366	43292
10	14	5360-00-007-9945	82366	43281
10	15	5305-01-004-6913	80205	NAS1189-4P10
10	16		14555	8519A7116-4
10	16		14555	8519A7117-4
10	17	3110-00-491-1494	82366	40005
11	1	5310-00-761-3706	96906	MS51967-15
11	2		96906	MS35338-48
11	3	5310-00-809-5998	96906	MS27183-18
11	4	5305-00-071-2073	96906	MS90728-117
11	5	5340-01-015-8667	97403	13217E7093
11	6	4010-01-013-5131	97403	13217E7094
11	7	5305-00-071-2070	96906	MS90728-114
11	8	4930-01-176-6945	97403	13217E7115-2
11	9	4930-01-179-3719	97403	13217E7115-1
11	10	5305-00-964-0589	96906	MS51095-416
11	11		97403	13217E7113
11	12		97403	13217E7114
11	13	3950-01-188-8202	97403	13217E7111
11	14		97403	13217E7112
11	15	5320-00-582-3272	96906	MS20600B4W6
11	16	5320-00-118-1995	96906	MS20470B4-6
11	17		96906	MS35825-2A
11	18	5320-00-165-8815	96906	MS20570B4-7
11	19	5340-00-237-6254	96906	MS18015-3
11	20		97403	13217E7112-6
11	21	9320-01-031-2959	97403	13217E7112-11
11	22	9320-01-030-6037	97403	13217E7112-13
11	23		97403	13217E7142
11	24	5320-00-582-3276	96906	MS20600AD6W4
11	25	5320-00-119-6826	96906	MS20470B4-16
11	26	5340-00-178-7870	96906	MS18015-2
11	27	3120-01-016-5938	97403	13217E7111-21
11	28	5320-00-582-3276	96906	MS20600AD6W4
11	29		97403	13217E7127
11	30		97403	13217E7101
12	1		97403	13217E7080
12	2	5305-00-915-8087	96906	MS18154-113
12	3	5310-00-809-5998	96906	MS27183-18
12	4		97403	13217E7092
12	5	5305-00-161-0698	96906	MS51105-464
12	6	5315-00-298-1481	96906	MS24665-357
12	7	5310-00-171-2435	96906	MS35692-58
12	8	5310-00-809-8533	96906	MS27183-23
12	9	4030-01-161-3989	97403	13217E7085
12	10		96906	MS35338-48

CROSS-REFERENCE INDEXES

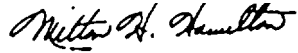
FIG.	ITEM	FIGURE AND ITEM NUMBER INDEX		PART NUMBER
		STOCK NUMBER	CAGEC	
12	11	5340-01-015-8667	97403	13217E7093
12	12	4010-01-013-5131	97403	13217E7094
12	13	5315-00-753-3895	96906	MS16562-256
12	14	4930-01-041-6870	97403	13217E7091
12	15	4930-01-017-3637	97403	13217E7088
12	16	5310-00-897-6082	96906	MS35691-36
12	17		97403	13217E7086
12	18	5330-00-733-2208	96906	MS29513-112
12	19	5305-00-543-2671	96906	MS51029-51
12	20	5430-00-110-4019	01400	113-6
12	21	5340-01-037-8739	97403	13217E7087
12	22	4930-01-013-7592	97403	13217E7089
12	23	5310-00-768-0318	96906	MS51967-14
12	24	4730-00-649-9100	96909	MS27028-11
12	25	4030-01-198-4257	96906	MS87006-22
12	26	4730-00-649-9100	96906	MS27028-11
12	26	4820-01-150-2927	09310	380AMQ2IN
12	27	4030-01-198-4257	96906	MS87006-22
12	27	5330-01-015-4753	97403	13217E7084
12	28		H2313	M25988/226ES
12	29	5330-00-318-8843	97403	13217E7082
12	30		H2313	M25988/226ES
12	30		81348	PPP-P-420TY2CLC
12	31	4730-01-029-0172	97403	13218E0122-17
12	32	3990-01-015-8457	97403	13217E7150
12	33		97403	13217E7152
12	34		97403	13217E7151
12	35		96906	MS27953-10
12	36		96906	MS35691-34
12	37		96906	MS27954-5
12	38		96906	MS27953-9
12	39		96906	MS27952-7
12	40	3990-01-169-5286	97403	13217E7157
12	41		97403	13217E7158
12	42		81348	FF-T-791TYPEICL7 FORM1SIZE.50X6IN
12	43		97403	13217E7159
12	44		96906	MS51967-8
12	45		96906	MS90725-64
12	46	5210-01-083-2926	97403	13217E7144
12	47		97403	13220E5288-2
13	1		97403	13226E0922
13	2	5315-00-298-1481	96906	MS24665-357
13	3	5310-00-732-6278	12718	887-23C
13	4		96906	MS35338-45
13	5	5430-00-794-6949	12718	887-23B
13	6	5306-00-324-0263	12718	887-23A
13	7	5330-00-732-6270	12718	887-22
13	8		12718	1097SA-4
13	9	5305-00-932-0962	12718	1097-8
13	10	5310-00-732-6278	12718	887-23C

CROSS-REFERENCE INDEXES

FIG.	ITEM	FIGURE AND ITEM NUMBER INDEX		PART NUMBER
		STOCK NUMBER	CAGEC	
13	11	5365-00-763-9326	12718	997R6
13	12	5310-00-692-9744	12718	887-7
13	13	5340-00-345-4838	12718	FX887-11
13	14		12718	FX887-11G
13	15		12718	FX997R-2
13	16		12718	937
13	17	5330-00-794-6947	12718	FX997-12
13	18	4930-00-922-2351	12718	1097-5
13	19		12718	1097SA-3
13	20	5305-00-915-8087	96906	MS18154-113
13	21	5310-00-768-0318	96906	MS51967-14
13	22		12718	1097S1
13	23		12718	887-L-541
13	24	5315-00-298-1481	96906	MS24665-357
13	25		12718	887-128
13	26		12718	887-130
13	27		12718	887-125
13	28		12718	887-123
13	29	5330-01-200-2705	12718	887-122
13	30	5310-01-334-7388	12718	1820-001
13	31		12718	887-801
13	32		12718	2097-301
13	33		12718	887-802
13	34		12718	2097-401
13	35		12718	1607-180
13	36		12718	2097-700
13	37		12718	2097-916
13	38		12718	2097-501
13	39		12718	2097-910
13	40		12718	887-353
13	41		12718	887-213
13	42		12718	937
13	43	5330-01-275-4433	12718	21-100
13	44		12718	2097-249
13	45	5330-01-200-2704	12718	2097-251
13	46		12718	2097-250
13	47		12718	887-140

By Order of the Secretary of the Army:

Official:



MILTON H. HAMILTON
*Administrative Assistant to the
Secretary of the Army*

00571

GORDON R. SULLIVAN
*General, United States Army
Chief of Staff*

DISTRIBUTION:

To be distributed in accordance with DA Form 12-25E, (qty rqr block no. 1727)
DA Form 12-25A, (qty rqr block no. 1727 and 1728)

The following format must be used if submitting an electronic 2028. The subject line must be exactly the same and all fields must be included; however only the following fields are mandatory: 1, 3, 4, 5, 6, 7, 8, 9, 10, 13, 15, 16, 17, and 27.

From: "Whomever" <whomever@avma27.army.mil>
To: mpmt@avma28.army.mil

Subject: DA Form 2028

1. **From:** Joe Smith
2. **Unit:** home
3. **Address:** 4300 Park
4. **City:** Hometown
5. **St:** MO
6. **Zip:** 77777
7. **Date Sent:** 19-OCT-93
8. **Pub no:** 55-2840-229-23
9. **Pub Title:** TM
10. **Publication Date:** 04-JUL-85
11. **Change Number:** 7
12. **Submitter Rank:** MSG
13. **Submitter FName:** Joe
14. **Submitter MName:** T
15. **Submitter LName:** Smith
16. **Submitter Phone:** 123-123-1234
17. **Problem:** 1
18. **Page:** 2
19. **Paragraph:** 3
20. **Line:** 4
21. **NSN:** 5
22. **Reference:** 6
23. **Figure:** 7
24. **Table:** 8
25. **Item:** 9
26. **Total:** 123
27. **Text:**
This is the text for the problem below line 27.

RECOMMENDED CHANGES TO EQUIPMENT TECHNICAL PUBLICATIONS



THEN . . . JOT DOWN THE DOPE ABOUT IT ON THIS FORM, CAREFULLY TEAR IT OUT, FOLD IT AND DROP IT IN THE MAIL!

SOMETHING WRONG WITH THIS PUBLICATION?

FROM: (PRINT YOUR UNIT'S COMPLETE ADDRESS)

PFC John DOE
CO 4 3rd Engineer Bn
Ft. Leonardwood, MO 63108

DATE SENT

22 August 1992

PUBLICATION NUMBER

TM 1-1520-250-10

PUBLICATION DATE

15 June 1992

PUBLICATION TITLE

Operator's manual MH60K Helicopter

BE EXACT PIN-POINT WHERE IT IS

IN THIS SPACE, TELL WHAT IS WRONG AND WHAT SHOULD BE DONE ABOUT IT:

PAGE NO	PARA-GRAPH	FIGURE NO	TABLE NO
6	2-1 a		
B1		4-3	

In line 6 of paragraph 2-1a the manual states the engine has 6 cylinders. The engine on my set only has 4 cylinders. Change the manual to show 4 cylinders.

Callout 16 in figure 4-3 is pointed at a bolt. In key to figure 4-3, item 16 is called a shim. Please correct one or the other.

PRINTED NAME, GRADE OR TITLE, AND TELEPHONE NUMBER

JOHN DOE, PFC (268) 317-7111

SIGN HERE

JOHN DOE *John Doe*

DA FORM 2028-2
1 JUL 79

PREVIOUS EDITIONS ARE OBSOLETE.
DRSTS-M verprint2, 1 Nov 80

P.S. - IF YOUR OUTFIT WANTS TO KNOW ABOUT YOUR RECOMMENDATION, MAKE A CARBON COPY OF THIS AND GIVE TO YOUR HEADQUARTERS.

FILL IN YOUR
UNITS ADDRESS



FOLD BACK

DEPARTMENT OF THE ARMY

OFFICIAL BUSINESS

COMMANDER
U.S. ARMY AVIATION AND TROOP COMMAND
ATTN: AMSAT-I-MP
4300 GOODFELLOW BOULEVARD
ST. LOUIS, MO 63120-1798

TEAR ALONG PERFORATED LINE

RECOMMENDED CHANGES TO EQUIPMENT TECHNICAL PUBLICATIONS



THEN . . . JOT DOWN THE DOPE ABOUT IT ON THIS FORM, CAREFULLY TEAR IT OUT, FOLD IT AND DROP IT IN THE MAIL!

SOMETHING WRONG WITH THIS PUBLICATION?

FROM: (PRINT YOUR UNIT'S COMPLETE ADDRESS)

DATE SENT

PUBLICATION NUMBER
TM 5-4930-230-23P

PUBLICATION DATE
28 January 1992

PUBLICATION TITLE
TANK AND PUMP UNIT, LIQUID DISPENSING

BE EXACT PIN-POINT WHERE IT IS				IN THIS SPACE, TELL WHAT IS WRONG AND WHAT SHOULD BE DONE ABOUT IT:
PAGE NO	PARA-GRAPH	FIGURE NO	TABLE NO	

PRINTED NAME, GRADE OR TITLE, AND TELEPHONE NUMBER

SIGN HERE

FILL IN YOUR
UNITS ADDRESS



FOLD BACK

DEPARTMENT OF THE ARMY

OFFICIAL BUSINESS

COMMANDER
U.S. ARMY AVIATION AND TROOP COMMAND
ATTN: AMSAT-I-MP
4300 GOODFELLOW BOULEVARD
ST. LOUIS, MO 63120-1798

TEAR ALONG PERFORATED LINE

RECOMMENDED CHANGES TO EQUIPMENT TECHNICAL PUBLICATIONS



THEN . . . JOT DOWN THE DOPE ABOUT IT ON THIS FORM, CAREFULLY TEAR IT OUT, FOLD IT AND DROP IT IN THE MAIL!

SOMETHING WRONG WITH THIS PUBLICATION?

FROM: (PRINT YOUR UNIT'S COMPLETE ADDRESS)

DATE SENT

PUBLICATION NUMBER TM 5-4930-230-23P	PUBLICATION DATE 28 January 1992	PUBLICATION TITLE TANK AND PUMP UNIT, LIQUID DISPENSING
--	--	---

BE EXACT PIN-POINT WHERE IT IS				IN THIS SPACE, TELL WHAT IS WRONG AND WHAT SHOULD BE DONE ABOUT IT:
PAGE NO	PARA-GRAPH	FIGURE NO	TABLE NO	

PRINTED NAME, GRADE OR TITLE, AND TELEPHONE NUMBER	SIGN HERE
---	------------------

FILL IN YOUR
UNITS ADDRESS



FOLD BACK

DEPARTMENT OF THE ARMY

OFFICIAL BUSINESS

COMMANDER
U.S. ARMY AVIATION AND TROOP COMMAND
ATTN: AMSAT-I-MP
4300 GOODFELLOW BOULEVARD
ST. LOUIS, MO 63120-1798

TEAR ALONG PERFORATED LINE



THEN . . . JOT DOWN THE DOPE ABOUT IT ON THIS FORM, CAREFULLY TEAR IT OUT, FOLD IT AND DROP IT IN THE MAIL!

SOMETHING WRONG WITH THIS PUBLICATION?

FROM: (PRINT YOUR UNIT'S COMPLETE ADDRESS)

DATE SENT

PUBLICATION NUMBER
TM 5-4930-230-23P

PUBLICATION DATE
28 January 1992

PUBLICATION TITLE
TANK AND PUMP UNIT, LIQUID DISPENS-
ING

BE EXACT PIN-POINT WHERE IT IS

IN THIS SPACE, TELL WHAT IS WRONG AND WHAT SHOULD BE DONE ABOUT IT:

PAGE NO	PARA-GRAPH	FIGURE NO	TABLE NO

PRINTED NAME, GRADE OR TITLE, AND TELEPHONE NUMBER

SIGN HERE

FILL IN YOUR
UNITS ADDRESS



FOLD BACK

DEPARTMENT OF THE ARMY

OFFICIAL BUSINESS

COMMANDER
U.S. ARMY AVIATION AND TROOP COMMAND
ATTN: AMSAT-I-MP
4300 GOODFELLOW BOULEVARD
ST. LOUIS, MO 63120-1798

TEAR ALONG PERFORATED LINE

The Metric System and Equivalents

Linear Measure

1 centimeter = 10 millimeters = .39 inch
 1 decimeter = 10 centimeters = 3.94 inches
 1 meter = 10 decimeters = 39.37 inches
 1 dekameter = 10 meters = 32.8 feet
 1 hectometer = 10 dekameters = 328.08 feet
 1 kilometer = 10 hectometers = 3,280.8 feet

Weights

1 centigram = 10 milligrams = .15 grain
 1 decigram = 10 centigrams = 1.54 grains
 1 gram = 10 decigrams = .035 ounce
 1 dekagram = 10 grams = .35 ounce
 1 hectogram = 10 dekagrams = 3.52 ounces
 1 kilogram = 10 hectograms = 2.2 pounds
 1 quintal = 100 kilograms = 220.46 pounds
 1 metric ton = 10 quintals = 1.1 short tons

Liquid Measure

1 centiliter = 10 milliliters = .34 fl. ounce
 1 deciliter = 10 centiliters = 3.38 fl. ounces
 1 liter = 10 deciliters = 33.81 fl. ounces
 1 dekaliter = 10 liters = 2.64 gallons
 1 hectoliter = 10 dekaliters = 26.42 gallons
 1 kiloliter = 10 hectoliters = 264.18 gallons

Square Measure

1 sq. centimeter = 100 sq. millimeters = .155 sq. inch
 1 sq. decimeter = 100 sq. centimeters = 15.5 sq. inches
 1 sq. meter (centare) = 100 sq. decimeters = 10.76 sq. feet
 1 sq. dekameter (are) = 100 sq. meters = 1,076.4 sq. feet
 1 sq. hectometer (hectare) = 100 sq. dekameters = 2.47 acres
 1 sq. kilometer = 100 sq. hectometers = .386 sq. mile

Cubic Measure

1 cu. centimeter = 1000 cu. millimeters = .06 cu. inch
 1 cu. decimeter = 1000 cu. centimeters = 61.02 cu. inches
 1 cu. meter = 1000 cu. decimeters = 35.31 cu. feet

Approximate Conversion Factors

To change	To	Multiply by	To change	To	Multiply by
inches	centimeters	2.540	ounce-inches	newton-meters	.007062
feet	meters	.305	centimeters	inches	.394
yards	meters	.914	meters	feet	3.280
miles	kilometers	1.609	meters	yards	1.094
square inches	square centimeters	6.451	kilometers	miles	.621
square feet	square meters	.093	square centimeters	square inches	.155
square yards	square meters	.836	square meters	square feet	10.764
square miles	square kilometers	2.590	square meters	square yards	1.196
acres	square hectometers	.405	square kilometers	square miles	.386
cubic feet	cubic meters	.028	square hectometers	acres	2.471
cubic yards	cubic meters	.765	cubic meters	cubic feet	35.315
fluid ounces	milliliters	29.573	cubic meters	cubic yards	1.308
pints	liters	.473	milliliters	fluid ounces	.034
quarts	liters	.946	liters	pints	2.113
gallons	liters	3.785	liters	quarts	1.057
ounces	grams	28.349	liters	gallons	.264
pounds	kilograms	.454	grams	ounces	.035
short tons	metric tons	.907	kilograms	pounds	2.205
pound-feet	newton-meters	1.356	metric tons	short tons	1.102
pound-inches	newton-meters	.11296			

Temperature (Exact)

°F	Fahrenheit	5/9 (after	Celsius	°C
	temperature	subtracting 32)	temperature	

